

STORMTECH®

nurtured by nature



2023 HOLIDAY GIFT GUIDE



STORMTECH®

nurtured by nature

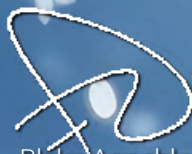
Happy Holidays and Best Wishes from all of us at STORMTECH

Welcome to the 2023 Holiday Gift Guide Interactive Catalogue.

As we have all explored new ways to work, connect, and collaborate, holiday gifts are more meaningful than ever.

This shareable 2023 Holiday Gift Guide features some of our most popular styles and a range of price points, to make it easy to find the perfect gift for any budget.

It is with continued optimism that we wish you continued success and prosperity through the holidays and in the New Year.



Blake Annable
President & CEO

TABLE OF CONTENTS



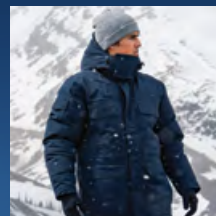
4
PREMIUM FLEECE



20
FLANNEL & TEES



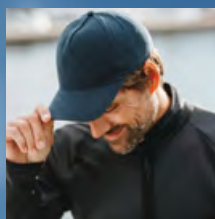
28
TECHNICAL SHELLS



36
THERMAL
OUTERWEAR



48
BAGS &
ACCESSORIES



74
HEADWEAR

Holiday Gift Guide 2023

PREMIUM FLEECE







CARIBOU FLEECE JACKET

FGX-1

A rustic deep woods inspired sherpa fleece jacket designed to keep cold temperatures at bay. Featuring front snaps for ease of use and lined handwarmer pockets. Perfect for those casual weekends in the city or staying warm and dry in the great outdoors. This brushed tricot lined collar allows for core temperature regulation and provides a warm, comfortable fit.

CARIBOU FLEECE JACKET

FGX-1

Tricot Lined Collar Stand
Provides an extra touch of comfort while maintaining collar shape and structure, even after washing

Center Front Zipper with Snap Closure Placket
For clean styling and top to bottom secure fit

Chest Pocket Flaps with Snaps
Allows you to quickly and conveniently stow and access personal items

Hand Pockets with Brushed Tricot
Perform a dual task of warming hands and stowing personal items

Cuff Placket with Snaps
Provide an adjustable and comfortable fit at the wrist

Contoured Hem
Ergonomic design that provides freedom of movement with a fashionably tailored fit



Fabrication 100% Polyester Sherpa Fleece,
9.14 oz/yd² (USA) / 310gsm (CDN)

Unisex Sizes XS-3XL (Carbon/Black XS-5XL)

Decoration Options **E** **LP**

MSRP \$140.00 (A)



Carbon/Black



Mineral/Black



Red/Black

BERGEN SHERPA FLEECE JACKET

DLX-1 | DLX-1W

Designed for optimum warmth and comfort in both urban and outdoor environments. This high pile bonded sherpa fleece jacket is indispensable on cold weather days. The high-zip collar allows for core temperature regulation and provides a snug, comfortable fit.



BERGEN SHERPA FLEECE VEST

DLV-1 | DLV-1W

Designed for optimum warmth and comfort in both urban and outdoor environments. This high pile bonded sherpa vest is indispensable on cold weather days. The high-zip collar allows for core temperature regulation and provides a snug, comfortable fit.

BERGEN SHERPA FLEECE JACKET

DLX-1 | DLX-1W

Additional Features

- Internal Full-Length Stormflap
- Elastic Hem & Cuff Trim
- Contoured Seaming (W's)
- Protective Trim
- Set-in Sleeves

Fabrication

(Shell) 100% Polyester Sherpa Fleece bonded with 100% Polyester Polar Fleece, 13.27 oz/yd² (USA) / 450 gsm (CDN); (Shell-Secondary) 100% Polyester, 2.30 oz/yd² (USA) / 78gsm (CDN)

Men's Sizes

S-3XL (Black S-5XL)

Women's Sizes

XS-2XL (Black XS-3XL)

Decoration Options



MSRP

\$120.00 (A)



M's & W's: Black

Zippered Hand Pockets with Brushed Tricot
Performs a dual task of warming hands and stowing personal items



W's: Zinc
(Available in M's)

M's: Indigo
(Available in W's)

Single Chest Pocket with Flap

Allows you to quickly and conveniently stow and access personal items

BERGEN SHERPA FLEECE VEST

DLV-1 | DLV-1W

Additional Features

- Internal Full-Length Stormflap
- Elastic Hem & Armhole Trim
- Contoured Seaming (W's)
- Protective Trim

Fabrication

(Shell) 100% Polyester Sherpa Fleece bonded with 100% Polyester Polar Fleece, 13.27 oz/yd² (USA) / 450 gsm (CDN); (Shell-Secondary) 100% Polyester, 2.30 oz/yd² (USA) / 78gsm (CDN)

Men's Sizes

S-3XL (Black S-5XL)

Women's Sizes

XS-2XL (Black XS-3XL)

Decoration Options



MSRP

\$90.00 (A)



M's & W's: Indigo

Zippered Hand Pockets with Brushed Tricot
Performs a dual task of warming hands and stowing personal items



W's: Black
(Available in M's)

M's: Zinc
(Available in W's)

Single Chest Pocket with Flap

Allows you to quickly and conveniently stow and access personal items

AVALANTE FLEECE SHIRT

SNF-1

The effortlessly stylish Avalante Fleece Shirt made from Recycled Polyester charms in all settings. Its on-trend detailing elevates its practical design features. Chest pocket flaps close with a snap, ensuring your items are secure and within easy reach. Hand warmer pockets, adjustable cuffs, and a centre front snap closure add to the functionality and comfort of this in-demand shirt.

Pure Earth by STORMTECH™

Made from Recycled Polyester for a reduced environmental footprint
75% RECYCLED POLYESTER

Woven Collar Lining For Shape Retention

Fully Lined Chest Pocket Flaps with Snaps

Stow personal items quickly and conveniently

Durable and Hard-Wearing Center Front Snap Closure

Easy to wear, functional and fashionable

Unisex Sizing

Designed to accommodate an extended size range from 2XS – 5XL

Sweater Knit Fleece with Brushed Interior

Ultra soft warmth and comfort

Brushed Tricot Hand Warmer Pockets

Keeps your hands warm and dry

Cuff Placket with Snaps

For an adjustable, comfortable fit at the wrist

Brushed Tricot Lined Center Front Placket, Cuffs and Hem

For comfort and warmth in cool weather



Fabrication 75% Recycled Polyester/25% Polyester Fleece, 9.44 oz/yd² (USA) / 320gsm (CDN)

Unisex Sizes 2XS-3XL (Black Heather, Granite Heather 2XS-5XL)

Decoration Options



Technology



MSRP \$120.00 (A)



Black Heather



Navy Heather



Granite Heather



Oatmeal Heather

AVALANTE FULL ZIP FLEECE JACKET

FHZ-1 | FHZ-1W

The Avalante Full Zip Fleece Jacket offers long lasting cold weather comfort. Raglan sleeve design provides unrestricted movement and a great fit. Valuables are safely secured in zippered pockets, while also keeping hands warm and dry. Full front zipper with low-profile chin saver provides added protection from the elements as you venture forth with a clear conscience, knowing this fleece jacket has been created from sustainably sourced Recycled Polyester fleece.

Additional Features

- Zippered Chest Pocket (M's)
- Brushed Tricot Lined Collar, Cuff and Hem
- Sweater Knit Fleece with Brushed Interior
- Zippered Hand Warmer Pockets
- Raglan Sleeves
- Zippered Sleeve Pocket (W's)
- Flatlock Seams
- Color Matched Trim

Fabrication

75% Recycled Polyester/25% Polyester Fleece, 9.44 oz/yd² (USA) / 320gsm (CDN)

Men's Sizes

S-3XL (Black Heather, Granite Heather S-5XL)

Women's Sizes

XS-2XL (Black Heather, Granite Heather XS-3XL)

Decoration Options



Technology



MSRP

\$120.00 (A)



M's & W's: Black Heather



M's & W's: Navy Heather

Low-Profile Chin Saver
Provides next to skin protection

Pure Earth by STORMTECH™
Made from Recycled Polyester for a reduced environmental footprint
75% RECYCLED POLYESTER



M's: Oatmeal Heather
(Available in W's)

W's: Granite Heather
(Available in M's)

AVALANTE FULL ZIP FLEECE VEST

FHV-1 | FHV-1W

Built for optimal warmth and comfort indoors or out. This design affords versatility with well-placed zippers to protect belongings and a secure full front zipper. Hand pocket lined for warmth while low-profile chin saver provides next to skin protection. Made from recycled polyester for a reduced environmental impact.

Additional Features

- Ultra Soft Sweater Knit Fleece with Brushed Interior
- Zippered Chest Pocket (M's)
- Zippered Hand Warmer Pockets
- Color Matched Trim
- Flatlock Seams
- Low-Profile Chin Saver

Fabrication

75% Recycled Polyester/25% Polyester Fleece, 9.44 oz/yd² (USA) / 320gsm (CDN)

Men's Sizes

S-3XL (Black Heather, Granite Heather S-5XL)

Women's Sizes

XS-2XL

Decoration Options



Technology



MSRP

\$95.00 (A)



M's & W's: Black Heather



M's & W's: Granite Heather

Zippered Chest Pocket (M's)
Quick access and secure storage of accessories

Pure Earth by STORMTECH™
Made from Recycled Polyester for a reduced environmental footprint
75% RECYCLED POLYESTER



M's: Navy Heather
(Available in W's)

W's: Oatmeal Heather
(Available in M's)

MONASHEE 1/4 ZIP PULLOVER TWX-5

MONASHEE COWL NECK PULLOVER TWX-5W

Adjust on the go. Layering styles adapt to the season, the Monashee 1/4 Zip Pullover with full coverage collar maintains a comfortable environment and adds aesthetic charm to its functionality. This is layering dexterity at its best. Made from Recycled Polyester and sustainably sourced BCI Cotton for a reduced environmental footprint.

- Additional Features
- UPF Rating 50+
 - Set-in Sleeves (M's)
 - Oversized Mock Neck Collar (W's)
 - Contoured Seaming (W's)
 - On-Seam Hand Warmer Pockets (W's)
 - 1x1 Rib Knit Cuffs and Hem

Fabrication

59% BCI Cotton/41% Recycled Polyester Fleece, 7.28 oz/yd² (USA) / 247gsm (CDN)

Men's Sizes

S-5XL

Women's Sizes

XS-2XL

Decoration Options

E

HT

LP

Technology

PURE EARTH

MSRP

\$80.00 (A)

Pure Earth by STORMTECH™
Made from Recycled Polyester and BCI Sourced Cotton for a reduced environmental footprint
59% BCI COTTON/ 41% RECYCLED POLYESTER

1/4 Zip Front (M's)
Adjust to shut out the cold or allow heat to escape

Dropped Back with Hem Side Slits (W's)
Provides additional warmth and protection

M's: Granite Heather
(Available in W's)

W's: Black
(Available in M's)

MONASHEE HENLEY TWX-4

A fundamental style staple. This Monashee L/S Henley is eternal for a good reason; versatile, comfortable, and eager to help you tick off your casual spring go-to list. Rib knit cuffs and hem gives you a secure fit and maximizes core warmth. Made from Recycled Polyester and sustainably sourced BCI Cotton for a reduced environmental footprint.

- Additional Features
- UPF Rating 50+
 - Raglan Sleeves
 - Double Topstitching

Fabrication

59% BCI Cotton/ 41% Recycled Polyester Fleece, 7.28 oz/yd² (USA) / 247gsm (CDN)

Men's Sizes

2XS-5XL

Decoration Options

E

HT

LP

Technology

PURE EARTH

MSRP

\$75.00 (A)

Pure Earth by STORMTECH™
Made from Recycled Polyester and BCI Sourced Cotton for a reduced environmental footprint
59% BCI COTTON/ 41% RECYCLED POLYESTER

3-Button Henley Placket
Provides modern, premium styling, flexibility, and comfort

1x1 Rib Knit Cuffs and Hem
Gives you a secure fit and maximizes core warmth

M's: Black

M's: Granite Heather

MONASHEE FLEECE JOGGER

TWXP-1

Discover our stylish and versatile Jogger Pant, crafted from soft and breathable fabrics for all-day comfort. With a modern tapered leg design, multiple pockets for convenience, and durable construction, these joggers effortlessly blend fashion and function, making them a must-have addition to your wardrobe.



1x1 Rib Knit Adjustable Waist with Drawcord

Seamlessly and comfortably adjusts from a loose to more contoured fit

On-Seam Hand Pockets

For stowing personal items and keeping hands warm

Pure Earth by STORMTECH™

Made from Recycled Polyester and BCI Sourced Cotton for a reduced environmental footprint

59% BCI COTTON/

41% RECYCLED POLYESTER

Double-Topstitching

For added strength and visual appeal

1x1 Rib Knit Cuffs

Rib knit construction provides enhanced durability and comfort



Fabrication

59% BCI Cotton/41% Recycled Polyester Fleece, 7.28 oz/yd² (USA) / 247gsm (CDN)

Men's Sizes

XS - 5XL

Decoration Options



Technology



MSRP

\$70.00 (A)



Black



Navy



Charcoal Heather



MEDUSA FLEECE HOODY

QMX-1 | QMX-1W

From sea to summit, life is built upon layers of experience and memories. The Medusa Fleece Hoody is the perfect urban or outdoor mid-layer for those days when winter is more than just a hint in the air. Its ultra-soft ottoman-knit fleece, scuba hood and low-profile, zippered hand warmer pockets create a perfect combination of comfort, style, and function. The Medusa Fleece Hoody is built with 100% recycled polyester fiber for a reduced environmental footprint.

MEDUSA FLEECE HOODY

QMX-1 | QMX-1W



Low-Profile Chin Saver
Provides extra next to skin and wind protection

Pure Earth by STORMTECH™
Made from Recycled Polyester for a reduced environmental footprint
100% RECYCLED POLYESTER

On-Seam Zippered Hand Warmer Pockets
Securely stow personal items and keep hands warm

Full-Coverage Easy-Lock Adjustable 3-Piece Hood
Easily adjust the hood for maximum warmth in cool weather

Brushed Tricot Hood Facing
Offers soft protection, comfort, and warmth in cool weather



Ultra-soft Ottoman-knit Fleece Shell

Contour Side Panels
Provide a flattering and comfortable fit

Brushed Tricot Cuffs, and Hem
Offers soft protection, comfort, and warmth in cool weather

Fabrication 100% Recycled Polyester Stripe Fleece, 9.0 oz/yd² (USA) / 305gsm (CDN)

Additional Features • Adjustable Hem

Technology



Men's Sizes S-3XL (Charcoal Stripe S-5XL)

Women's Sizes XS-2XL

Decoration Options



MSRP \$100.00 (A)



M's & W's: Charcoal Stripe



M's & W's: Zinc Stripe

NOVARRA FULL ZIP HOODY

MXF-2 | MXF-2W

The Novarra Full Zip Hoody is a versatile, lightweight hoody featuring an ultra-soft ottoman-knit fleece shell and hood to allow for easy movement and a smooth silhouette in any position. A perfect fit for work or play, the soft, elastic-knit cuffs and hem provide ultimate comfort. Adjustable hood with drawcord provides weather protection. The Novarra Full Zip Hoody is built with a blend of both regular and recycled fibers for a reduced environmental footprint



Low-Profile Chin Saver
Provides extra next to skin and wind protection

Pure Earth by STORMTECH™
Made from Recycled Polyester for a reduced environmental footprint
60% RECYCLED POLYESTER

Brushed Tricot Hood Facing and Hand Pockets
Offers soft protection, comfort, and warmth in cool weather

Elastic Hem and Cuff Trim
Provides a secure fit and maximizes core warmth

Full-Coverage Easy-Lock Adjustable 3-Piece Hood
Easily adjust the hood for in cool weather



Ultra-soft Ottoman-knit Fleece Shell

Contour Side Panels
Provide a flattering and comfortable fit

Exposed Zippered Hand Warmer Pockets
Perform a dual task of warming hands and stowing personal items



Fabrication 60% Recycled Polyester/ 40% Regular Polyester Fleece, 5.16 oz/yd² (USA) / 175gsm (CDN)

Men's Sizes S-5XL

Women's Sizes XS-2XL (Carbon Stripe XS-3XL)

Decoration Options



Technology



MSRP

\$85.00 (A)



M's & W's: Carbon Stripe



M's & W's: Classic Blue Stripe

NOVARRA FULL ZIP JACKET

MXF-1 | MXF-1W

Casual just became serious. From sea to sky to summit, life is built upon layers of experience and memories. The Novarra Jacket is the perfect urban or outdoor mid-layer for those days where winter is more than just a hint in the air. Its ultrasoft ottoman-knit fleece, and low-profile, zippered hand warmer pockets are the perfect combination of comfort, style, and function. Make your life story the one that keeps them talking. Made with Recycled Polyester content for a reduced environmental footprint.

- Additional Features
- Concealed Zippered Hand Pockets with Brushed Tricot
 - Low-Profile Chin Saver
 - Contoured Seaming (W's)
 - Articulated Action Shoulders
 - Elastic Hem and Cuff Trim

Fabrication

60% Recycled Polyester/
40% Regular
Polyester Fleece, 5.16 oz/yd² (USA) /
175gsm (CDN)

Men's Sizes

S-3XL (Carbon Stripe S-5XL)

Women's Sizes

XS-2XL

Decoration Options

E

LP

Technology

PURE EARTH

PERFORMANCE

MADE FROM RECYCLED POLYESTER

MSRP

\$70.00 (A)

Pure Earth by
STORMTECH™

Made from Recycled
Polyester for a reduced
environmental footprint

60% RECYCLED
POLYESTER



Ottoman-knit Fleece Shell



W's: Classic Blue Stripe
(Available in M's)

M's: Carbon Stripe
(Available in W's)

Brushed Tricot Lined Collar

Offers soft protection, comfort, and
warmth in cool weather

NOVARRA VEST

MXV-1 | MXV-1W

Life is built upon layers of experience and memories. The Novarra Vest is the perfect urban or outdoor mid-layer for those days where winter is more than just a hint in the air. Its ultra-soft ottoman-knit fleece, and low-profile, zippered hand warmer pockets are the perfect combination of comfort, style, and function. Make your life story the one that keeps them talking. Made with Recycled Polyester content for a reduced environmental footprint.

- Additional Features
- Low-Profile Chin Saver
 - Concealed Zippered Hand Pockets with Brushed Tricot
 - Contoured Seaming (W's)
 - Brushed Tricot Lined Collar
 - Elastic Hem and Armhole Trim

Fabrication

60% Recycled Polyester/ 40% Regular
Polyester Fleece, 5.16 oz/yd² (USA) /175gsm (CDN)

Men's Sizes

S-3XL (Carbon Stripe S-6XL)

Women's Sizes

XS-2XL (Carbon Stripe XS-3XL)

Decoration Options

E

LP

Technology

PURE EARTH

PERFORMANCE

MADE FROM RECYCLED POLYESTER

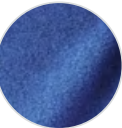
MSRP

\$60.00 (A)

Pure Earth by
STORMTECH™

Made from
Recycled Polyester
for a reduced
environmental
footprint

60% RECYCLED
POLYESTER



Ottoman-knit
Fleece Shell



W's: Carbon Stripe
(Available in M's)

M's: Classic Blue Stripe
(Available in M's)

Brushed Tricot Lined Collar

Offers soft protection, comfort, and
warmth in cool weather



SHASTA TECH FLEECE 1/4 ZIP

FPL-1 | FPL-1W

Reach the summit at work or play. This lightweight polar fleece layer delivers comfort and warmth on cold days. Classically styled, this pullover is a versatile adventurer that is as content on the city streets as it is on a mountain top. The quarter-zip high collar allows for core temperature regulation and provides a cozy, comfortable fit. So, now all that's left to do is to warm your hands inside the brushed tricot kanga pocket and radiate a smile of contentment to the world.

SHASTA TECH FLEECE 1/4 ZIP

FPL-1 | FPL-1W

**Anti-Pill Polyester
Polar Fleece**
Provides optimal
warmth and garment
durability

**Kanga Pocket
with Brushed
Tricot**
For stowing
personal items
and keeping
hands warm

¼ Zip with High Collar
Adjust to shut out the
cold or allow heat to
escape



**Additional
Features**

- Internal Audio Sleeve
- Contrast Cuff and Hem

Fabrication

(Shell) 100% Polyester Fleece, 6.93 oz/yd² (USA) / 235gsm (CDN);
(Shell-Secondary) 100% Polyester Pongee,
2.30 oz/y² (USA) / 78gsm (CDN)

Men's Sizes

S-3XL (Black S-6XL)

Women's Sizes

XS-2XL (Black XS-3XL)

**Decoration
Options**



MSRP

\$70.00 (A)



M's & W's: Black



M's & W's: Graphite/Black



M's & W's: Navy

Holiday Gift Guide 2023

FLANNEL & TEES







LOGAN SNAP FRONT SHIRT

SFX-1 | SFX-1W

Urban culture mashed with a sharp eye for fashion defines this lightweight button-up with classic plaid patterns. Features include a snap-front design with two chest pockets made from an easy-care cotton/poly blend. The ergonomic design provides freedom of movement with a fashionably tailored fit.

NORTH BEACH SHACKET

QPX-1 | QPX-1W

A casual and comfortable, work inspired plaid shacket with insulated quilted design to keep you warm. Featuring front snaps for ease of use and lined handwarmer pockets. Perfect for a casual weekend in the city or an escape outdoors.

- Additional Features
- Full Placket with Snaps
 - Collar Stand
 - Internal Chest Pocket
 - Cuff Placket with Snaps

Fabrication

(Shell) 60% Cotton/40% Nylon,
4.57 oz/yd² (USA) / 155gsm (CDN);
(Lining) 100% Polyester

Men's Sizes

S-3XL (Black/Dolphin S-5XL)

Women's Sizes

XS-2XL

Decoration Options

E

LP



MSRP

\$135.00 (A)

Chest Pocket Flaps with Snaps

Protect your valuables safely and securely with easy access

Diamond Quilted Polyfill

Diamond construction designed to secure polyfill in place while staying on trend



W's: Earth/Navy
(Available in M's)

M's: Black/Dolphin
(Available in W's)

STORMTECH Thermal Shell Technology
High loft synthetic insulation, designed to be lightweight and compactible

LOGAN SNAP FRONT SHIRT

SFX-1 | SFX-1W

Urban culture mashed with a sharp eye for fashion defines this lightweight button-up with classic plaid patterns. Features include a snap-front design with two chest pockets made from an easy-care cotton/poly blend. The ergonomic design provides freedom of movement with a fashionably tailored fit.

- Additional Features
- Cuff Placket with Snaps
 - Contoured Hem

Fabrication

60% Cotton/40% Polyester Single Dyed
Twill check, 4.57 oz/yd² (USA) / 155gsm (CDN)

Men's Sizes

S-5XL (Black/Red Plaid, Carbon Plaid XS-6XL)

Women's Sizes

XS-2XL (Black/Red Plaid, Royal Plaid, Carbon Plaid XS-3XL)

Decoration Options

E

HT

LP

MSRP

\$70.00 (A)

Chest Pocket Flaps with Snaps

Conveniently secure personal items

Full Front Button Closure

Easy to wear casually or to work



W's: Black/Dolphin
(Available in M's)

M's: Earth/Navy
(Available in W's)



M's & W's:
Carbon Plaid

M's & W's:
Navy Plaid

M's & W's: Black/
Red Plaid

M's & W's:
Titanium Plaid

M's & W's:
Royal Plaid

DOCKYARD L/S TWILL SHIRT

SXW-1 | SXW-1W

The Dockyard L/S Shirt delivers a refreshing update to the traditional twill work shirt. This urban outdoor staple features a highly durable brushed twill construction with single chest pockets, button closures and a contoured hem finish.

Full Front Button Closure

Full front buttons provide both secure closure and added styling

Flat Felled Side Seam

Side seam construction designed to lay comfortably flat and reduce chafing

Contoured Hem

Ergonomic design that provides freedom of movement with a fashionably tailored fit

Single Chest Pocket (W's)

Allow you to conveniently stow and access personal items quickly

Contoured Seaming (W's)

Provides a closer to body fit and sleek silhouette

Cuff Placket with Buttons

Provides an adjustable and comfortable fit at the wrist

Additional Features

- Single Chest Pocket with Flap (M's)

Fabrication

100% Cotton Flannel,
4.87 oz/yd² (USA) / 165gsm (CDN)

Men's Sizes

S-5XL

Women's Sizes

XS-3XL

Decoration Options



MSRP

\$75.00 (A)



M's & W's: Graphite



M's & W's: Indigo

SANTA FE L/S SHIRT

FTX-1 | FTX-1W

Vibrant color palette with sleek design delivers a refreshing take on the traditional plaid shirt. This urban outdoor staple has a clean, unforced finish that casually creates an eye-catching, cultured look with snap chest pockets, snap closures and a contoured hem finish of this urban essential.

Additional Features

- Flat Felled Side Seams
- Cuffs Placket with Snaps
- Full Front Button Closure

Fabrication

60% Cotton/40% Polyester Woven Flannel, 4.57 oz/yd2 (USA) / 155gsm (CDN)

Men's Sizes

S-5XL

Women's Sizes

XS-2XL (Red/Black, Carbon/Black, Mineral/Black XS-3XL)

Decoration Options



MSRP

\$70.00 (A)

Contoured Hem
Ergonomic design that provides freedom of movement with a fashionably tailored fit



M's: Mineral/Black
(Available in W's)

W's: Blue/Black
(Available in M's)

Double Chest Pockets

Allow you to conveniently stow and access personal items quickly safely

Contoured Seaming (W's)

Provides a closer to body fit and sleek silhouette



M's & W's: Carbon/
Black



M's & W's: Red/
Black

LOGAN THERMAL L/S SHIRT

FLX-1 | FLX-1W

The classic plaid design combined with solid panels highlights this fleece-lined, breathable cotton-blend thermal shirt. Featuring snap pockets, a center front, and cuff closures for added styling and easy use.

Additional Features

- Micro Fleece Lining
- Insulated Sleeves with Taffeta Lining
- Double Needle Topstitching
- Cuff Placket with Snaps
- Pleated Back Yoke

Fabrication

(Shell) 60% Cotton/40% Polyester Single Dyed Twill, 4.57 oz/yd² (USA) / 155gsm (CDN);
(Lining) 100% Polyester

Men's Sizes

S-6XL

Women's Sizes

XS-3XL

Decoration Options



MSRP

\$100.00 (A)

Full Front Snap Closure

Make it easy to wear casually or to work

Flapped Chest Pockets with Snap Closures

Conveniently secures personal items



M's: Navy Plaid
(Available in W's)

W's: Black/Red Plaid
(Available in M's)



M's & W's: Carbon
Plaid

ASHBURN CREW NECK

WK-1 | WK-1W

The Ashburn Crew Neck Tee combines sustainably sourced BCI Cotton for superior softness with durable Recycled Polyester to help maintain shape and transport moisture away from the skin. Taped neck seam provides extra comfort and durability while UPF Rating 50+ protects the skin from the sun's rays.



ASHBURN HENLEY

WK-2 | WK-2W

The Ashburn Henley combines sustainably sourced BCI Cotton for superior softness with durable Recycled Polyester to help maintain shape and transport moisture away from the skin. Taped neck seam provides extra comfort and durability while UPF Rating 50+ protects the skin from the sun's rays.

ASHBURN CREW NECK

WK-1 | WK-1W

- Additional Features
- UPF Rating 50+
 - 1x1 Rib Knit Collar and Cuffs
 - Anti-Pill Waffle Fabric

Fabrication

58% BCI Cotton/42% Recycled Polyester Waffle,
5.54 oz/yd² (USA) / 188gsm (CDN)

Men's Sizes

S-5XL

Women's Sizes

XS-2XL

Decoration Options

E

HT

LP

Technology

H2XDRY

MOISTURE MANAGEMENT

PURE EARTH

PERFORMANCE

MSRP

\$55.00 (A)

STORMTECH H2X-DRY® Moisture Management
Draws moisture away from the skin, helping to maintain optimal body comfort

Pure Earth by STORMTECH™
Made from Recycled Polyester and BCI Sourced Cotton for a reduced environmental footprint
58% BCI COTTON/ 42% RECYCLED POLYESTER



W's: Black
(Available in M's)

M's: Graphite
(Available in W's)

ASHBURN HENLEY

WK-2 | WK-2W

- Additional Features
- UPF Rating 50+
 - 1x1 Rib Knit Collar and Cuffs
 - 3-Button Henley Placket (M's)
 - 5-Button Henley Placket (W's)
 - Anti-Pill Waffle Fabric

Fabrication

58% BCI Cotton/42% Recycled Polyester Waffle,
5.54 oz/yd² (USA) / 188gsm (CDN)

Men's Sizes

S-5XL

Women's Sizes

XS-2XL

Decoration Options

E

HT

LP

Technology

H2XDRY

MOISTURE MANAGEMENT

PURE EARTH

PERFORMANCE

MSRP

\$55.00 (A)

Pure Earth by STORMTECH™
Made from Recycled Polyester and BCI Sourced Cotton for a reduced environmental footprint
58% BCI COTTON/ 42% RECYCLED POLYESTER

STORMTECH H2X-DRY® Moisture Management
Draws moisture away from the skin, helping to maintain optimal body comfort



W's: Graphite
(Available in M's)

M's: Black
(Available in W's)

Holiday Gift Guide 2023

TECHNICAL SHELLS







VERTEX STORMSHELL

RX-2 | RX-2W

Extreme weather protection with full coverage storm hood and YKK® AquaGuard® waterproof zipper. The Vertex Stormshell features 3-Layer H2XTREME® waterproof/breathable technology and an advanced articulation and ergonomic fit with mechanical stretch fabric, allowing for a full range of unrestricted movement. Pit zippers help regulate your core temperature, and an articulated adjustable hood with a welded brim provides a comfortable fit and sheds water away from your face. The Vertex Stormshell is built with regular and recycled polyester fabrics for a reduced environmental footprint.

VERTEX STORMSHELL

RX-2 | RX-2W

NEW STYLE
NEW STYLE

STORMTECH H2XTREME® Waterproof / Breathable Outer Shell

3-Layer Outer Shell offers a high level of waterproofing while allowing moisture vapor to exit the garment

Pure Earth by STORMTECH™

Made from Recycled Polyester for a reduced environmental footprint
**45% RECYCLED
POLYESTER**

**PFC-Free Durable
Water Repellent Finish**
Environmentally-friendly finish enhances waterproofing performance

**High-Performance
Windproof Outer Shell
with Mechanical Stretch**
100% windproof outer shell fabric helps maintain thermal performance by keeping the heat in

**Concealed Hood
Adjustments with Easy-
Access Drawcord**
Adjusts externally and away from your face

**Helmet Compatible,
Full-Coverage Hood**
Provides maximum weather protection and extra room for your protective headwear needs

**Ergonomic, Full-Coverage
Center Front Neck**
Provides optimal range of motion and ultimate weather protection

Fully Sealed Seams
Ensure that no water enters your jacket, leaving you dry and comfortable for hours

**Waterproof Zippered
Hand Pockets**
Prevents water from penetrating through zipper to keep your valuables safe and dry

Adjustable Cuffs
Adjust to provide a more secure fit and keep the elements out



**WATERPROOF
LEVEL 3**
20,000MM



**BREATHABLE
LEVEL 3**
10,000G/M²



WINDPROOF



**+5°C TO -10°C
41°F TO 14°F**



**FULLY SEALED
SEAMS**

Additional Features

- YKK® AquaGuard® Center Front Zipper
- Articulated Elbows
- Two-Way Waterproof Pit Zips
- Welded Hood Brim
- Welded Brushed Tricot Back Neck Reinforcement
- Internal Mesh Stash Pockets
- Adjustable Dropped-Back Hem
- Waterproof Zippered Sleeve Pocket

Fabrication

55% Polyester/ 45% Recycled Polyester Mechanical Stretch bonded with 100% Recycled Polyester Single Jersey, 5.31 oz/yd² (USA) / 180gsm (CDN)

Men's Sizes

S-3XL (Granite/Black S-5XL)

Women's Sizes

XS-2XL (Granite/Black XS-3XL)

Decoration Options



MSRP

\$350.00 (A)

Technology

H2XTREME
WATERPROOF/BREATHABLE
STORM PROTECTION



M's & W's: Granite/Black



M's & W's: Dusk/Midnight



M's & W's: Chive/Cypress



M's & W's: Red/Crimson



SCIROCCO LIGHTWEIGHT SHELL

SSR-5 | SSR-5W

A shell that is resolute about providing maximum outdoor protection.

The urban styled Scirocco Waterproof Shell shuts the rain and the wind out with its exclusive H2XTREME® waterproof/breathable technology, rollaway hood, and waterproof zippered chest pockets. Comfort comes standard with an ergonomic design that promotes unrestricted movement.

SCIROCCO LIGHTWEIGHT SHELL

SSR-5 | SSR-5W

PURE EARTH BY STORMTECH™

Made from Recycled Polyester for a reduced environmental footprint
100% RECYCLED POLYESTER

STORMTECH H2XTREME® Waterproof / Breathable Outer Shell

Offers a high level of waterproofing while allowing moisture vapor to exit the garment

Waterproof Zippered Hand Pockets with Brushed Tricot

Perform a dual task of warming hands and stowing personal items

Adjustable Cuffs and Hem

Allow you to adjust the fit of the cuff precisely for maximum comfort and performance in cold weather

Rollaway Hood with Adjustable Drawcord

Allows you to adjust the fit of the hood for maximum warmth in cool weather

Brushed Tricot Lined Collar

Offers soft protection, comfort and warmth in cool weather

Fully Seam Sealed

Ensures that no water enters your jacket, leaving you dry and comfortable for hours

PFC-Free Durable Water Repellent Finish
Environmentally-friendly finish enhances waterproofing performance

Mesh Lined Back Vent
For enhanced ventilation and performance during activity



WATERPROOF LEVEL 3
10,000MM



BREATHABLE LEVEL 3
10,000G/M²



+20°C TO +5°C
68°F TO 41°F



FULLY SEALED SEAMS

Additional Features

- Waterproof Center Front Zipper
- Waterproof Zippered Chest Pockets
- Contoured Seaming (W's)

Fabrication

(Shell) 100% Recycled Polyester Twill, 4.10 oz/yd² (USA) / 139gsm (CDN);
(Lining) 100% Recycled Polyester

Men's Sizes

S-3XL (Black S-5XL)

Women's Sizes

XS-2XL (Black XS-3XL)

Decoration Options



MSRP

\$200.00 (A)

Technology

H2XTREME
WATERPROOF/BREATHABLE
STORM PROTECTION



M's & W's: Black



M's & W's: Granite



M's & W's: Navy

CASCADES SOFTSHELL

BHS-3 | BHS-3W

Hone your edge. Warm weather can be unexpectedly replaced by sporadic showers. However, it just adds to the experience when you hit the trails with the Cascades Softshell. As its name implies, it features the latest in softshell fabric technology. It also provides durable protection against light rain with its PFC-Free waterproof, breathable bonded shell, internal full length stormflap, and multiple zippered pockets.

Zippered Chest Pocket
Protects your valuables safely and securely with easy access

Zippered Hand Warmer Pockets
Perform a dual task of warming hands and stowing personal items

Adjustable Cuffs
Allow you to adjust the fit of the cuff precisely

STORMTECH H2XTREME® Waterproof / Breathable Outer Shell
Offers a high level of waterproofing while allowing moisture vapor to exit the garment

Articulated Sleeves
Ergonomic design detail promotes a free range of movement

Adjustable Hem with Drawcord
Provides a comfortable fit and maximizes core temperature control



WATERPROOF
LEVEL 3
8,000MM



BREATHABLE
LEVEL 3
10,000G/M²



+5°C TO -10°C
41°F TO 14°F

Additional Features

- PFC-Free Water Repellent Finish
- Internal Full-Length Stormflap

Fabrication

(Shell) 90% Polyester/10% Spandex bonded with 100% Polyester Fleece, 9.44 oz/yd² (USA) / 320gsm (CDN);
(Lining) 100% Polyester

Men's Sizes

S-3XL (Black/Black, Navy/Navy S-5XL) (Dolphin/Black S-6XL)

Women's Sizes

XS-2XL (Black/Black, Dolphin/Black, Navy/Navy XS-3XL)

Technology

H2XTREME
WATERPROOF/BREATHABLE
STORM PROTECTION

Decoration Options



MSRP

\$130.00 (A)



M's & W's: Black/Black



M's & W's: Navy/Navy



M's & W's: Dolphin/Black



M's & W's: Azure Blue/Black



M's & W's: Bright Red/Black

OLYMPIA SHELL

GXJ-2 | GXJ-2W | GXJ-2R

A wet, rainy forecast should not get in the way of any outdoor activity. Come prepared with the ultralight Olympia Shell with PFC-Free waterproof, breathable fabric, adjustable hood and a full-length stormflap. This lightweight shell offers articulated comfort and superior, technical weather-ready features.

STORMTECH H2XTREME®
Waterproof / Breathable Outer Shell
Offers a high level of waterproofing while allowing moisture vapor to exit the garment

Zippered Chest Pocket
Protects your valuables safely and securely with easy access

Adjustable Cuffs
Seals in body heat and provides additional protection from the cold

Adjustable Attached Hood
Conveniently adjusts for customizable warmth and protection from inclement weather

Internal Full-Length Stormflap
Guards against cold, rain and wind entering through the zipper

PFC-Free Water Repellent Finish
Provides ample water resistance in wet weather

Zippered Pockets
Perform the dual task of warming hands and stowing personal items



WATERPROOF
LEVEL 2
5,000MM



BREATHABLE
LEVEL 2
5,000G/M²



+20°C TO +5°C
68°F TO 41°F



CRITICALLY
SEALED SEAMS

Additional Features

- Critically Sealed Seams
- Adjustable Hem with Drawcord
- Articulated Sleeves

Fabrication

100% Polyester Ripstop, 3.07oz/yd² (USA)/
104gsm (CDN) with 100% Polyester Lining

Men's Sizes

S-3XL (Black/Black, Granite/Black, Navy/Granite S-5XL)

Women's Sizes

XS-2XL (Black/Black, Granite/Black, Navy/Granite XS-3XL)

Technology

H2XTREME
WATERPROOF/BREATHABLE
STORM PROTECTION



Decoration Options



MSRP (GXJ-2)

\$140.00 (A) (M'S & W'S)

MSRP (GXJ-2R)

\$160.00 (A) (M'S)



M's & W's: Black/Black



M's & W's: Black/
Azure blue



M's & W's: Black/Bright Red



M's & W's: Granite/Black



M's & W's: Navy/Granite



GXJ-2R M's: Black
(Reflective)



GXJ-2R M's: Navy
(Reflective)

Holiday Gift Guide 2023

THERMAL OUTERWEAR





thermo



DENALI PARKA

EPK-3 | EPK-3W

Extreme comfort in extreme cold. The Denali Parka delivers the highest level of protection from the elements with classic Arctic explorer design elements and features, including; Thermolux™ high loft synthetic down fill, H2XTREME® waterproof technology, deep dive handwarmer pockets and a fully insulated storm hood with a face shield for maximum comfort in the most extreme conditions. The Denali Parka is also built with a blend of virgin and recycled nylon for a reduced environmental footprint.

DENALI PARKA

EPK-3 | EPX-3W

NEW STYLE
NEW STYLE

STORMTECH Thermolex™

High Loft Synthetic Down

High loft synthetic insulation, designed to be compressible, and provide maximum warmth

STORMTECH HD 2-Layer

H2XTREME® Waterproof / Breathable Outer Shell

Heavy-duty, highly durable, nylon taslon fabric constructed to withstand extreme applications and weather conditions

Top and Side Access Chest Pockets with Polar Pocket Insulation

Four chest pockets to provide ample storage and thermal protection for electronic devices

PFC-Free Water Repellent Finish

Provides ample water resistance in wet weather

Internal Rib Knit Cuffs

Comfortably seals in warmth around the wrist and seals the draft out

Full Coverage Snap-Off Insulated Hood

Provides maximum weather protection and customization

Fully Sealed Seams

Ensure that no water enters your jacket, leaving you dry and comfortable for hours

High-Performance Windproof Outer Shell

100% windproof outer shell fabric helps maintain thermal performance by keeping the heat in

Top and Side Access Insulated Zippered Hand Pockets

Lined with brushed tricot and thermal insulation to keep hands extra warm

Pure Earth by STORMTECH™

Outer Shell made from Recycled Nylon and Recycled Polyester for a reduced environmental footprint
45% RECYCLED NYLON (OUT SHELL)/40% RECYCLED POLYESTER (LINER)



WATERPROOF
LEVEL 3
10,000MM



BREATHABLE
LEVEL 3
10,000G/M²



WINDPROOF



-10°C TO -30°C
14°F TO -22°F



FULLY SEALED SEAMS

Additional Features

- Articulated Elbows
- Zip-Off Insulated Hood Trim
- Reinforced, Flexible Hood Opening
- 2-Way Front Zipper
- Bicep Utility Pocket
- Internal Waist Adjustment
- Full-Length Insulated External Stormflap
- External Insulated Hood Overlap
- Internal Power Skirt
- Internal Stormflap with Brushed Tricot
- Internal Zippered Chest Pocket
- Internal Mesh Stash Pockets
- Parka Length
- Decoration Access

Fabrication

(Shell) 55% Nylon/ 45% Recycled Nylon Taslon Oxford, 7.23 oz/yd² (USA) / 245gsm (CDN); (Lining) 60% Polyester/ 40% Recycled Polyester Taffeta

Men's Sizes

S-3XL (Black/Granite S-5XL)

Women's Sizes

XS-2XL (Black/Granite XS-3XL)

Decoration Options



MSRP

\$450.00 (A)

Technology

H2XTREME
WATERPROOF/BREATHABLE
STORM PROTECTION



thermolex™
HIGH LOFT SYNTHETIC DOWN

HD HEAVY DUTY
OUTER SHELL



M's & W's: Black/Granite



M's & W's: Granite/Black



M's & W's: Midnight/
Midnight



M's & W's: Red/Black

NOSTROMO THERMAL SHELL

X-2 | X-2W

The highly technical lightweight Nostromo Thermal Shell has been designed to immerse you in comfort, regardless of the weather's mood. The H2XTREME® waterproof/breathable outer shell allows moisture to escape, while the PFC-Free water repellent finish denies entry to the wet. The adjustable hem, hood, and articulated elbows give you the freedom to fully embrace comfort and function.

STORMTECH H2XTREME® Waterproof / Breathable Outer Shell

Offers a high level of waterproofing while allowing moisture vapor to exit the garment

Waterproof Zippered Chest Pocket (M's)

Protects your valuables safely and securely with easy access

Ultra-Lightweight Nylon Taffeta Lining

For enhanced lightweight comfort

Windproof Outer Shell Fabric

100% windproof outer shell fabric helps maintain thermal performance by keeping the heat in

Adjustable Full Coverage Hood

Conveniently adjusts for individualized warmth and protection from inclement weather

PFC-Free Durable Water Repellent Finish

Environmentally-friendly finish enhances waterproofing performance

Fully Seam Sealed

Ensures that no water enters your jacket, leaving you dry and comfortable for hours

Feather Free Thermal Shell

High loft synthetic insulation, designed to be lightweight and compactable

Articulated Action Elbows

Provide optimal range of motion

Sleeve Pocket (W's)

Purposeful stowage location for quick access to small essentials



WATERPROOF
LEVEL 3
10,000MM



BREATHABLE
LEVEL 3
10,000G/M²



WINDPROOF



+5°C TO -10°C
41°F TO 14°F



FULLY SEALED
SEAMS

Additional Features

- Internal Chest Pocket
- Internal Mesh Stash Pocket
- Waterproof Center Front Zipper
- Zippered Hand Warmer Pockets
- Chin Saver
- Decoration Access

Fabrication

(Shell) 100% Polyester Mechanical Stretch,
3.54 oz/yd² (USA) / 120gsm (CDN);
(Lining) 100% Nylon Taffeta

Men's Sizes

S-5XL

Women's Sizes

XS-3XL

Technology

H2XTREME
WATERPROOF/BREATHABLE
STORM PROTECTION

thermolex™
HIGH LOFT SYNTHETIC DOWN



Decoration Options



MSRP

\$200.00 (A)



M's & W's: Black/Graphite



M's & W's: Graphite/Black



M's & W's: Navy/Graphite

STAVANGER THERMAL JACKET

AFP-2 | AFP-2W | AFP-2Y

Technical. Functional. Essential. Locking down heat even when wet, STORMTECH's Stavanger Thermal Jacket showcases our PFC-Free durable water resistance, and high-loft, Feather-Free synthetic insulation. Designed for ergonomic fit and maximum versatility, features a self-packable pocket that converts to a pillow, audio ports, elasticized cuffs, and internal pockets for life on the go.

Additional Features

- D/W/R Outer Shell
- Broken Fiber Polyfill
- Audio System
- Internal Pocket
- Adjustable Hem
- Ergonomic Fit

Fabrication

100% Nylon, 118oz./yd² (USA) /40gsm (CDN)

Men's Sizes

S-3XL (Black/Graphite S-5XL)

Women's Sizes

XS-2XL (Black/Graphite XS-3XL)

Youth's Sizes

XS-XL

Decoration Options



Technology



thermolex™
HIGH LOFT SYNTHETIC DOWN



WATERPROOF
LEVEL 1
600MM



BREATHABLE
LEVEL 1
1,000G/M²



WINDPROOF



+5°C TO -10°C
41°F TO 14°F

Feather Free Thermal Shell

High loft synthetic insulation, designed to be lightweight and compactible

Elasticized Cuffs

Block cold air from entering the sleeve and offers a secure fit

Full Coverage Attached Hood

For easily accessible warmth and protection from the elements

PFC-Free Water Repellent Finish

Provides ample water resistance in wet weather



M's: Black/Azure Blue
(Available in W's)

W's: Black/Graphite
(Available in M's & Y's)



M's & W's: Graphite/
Graphite



M's, W's & Y's: Navy/
Graphite



M's & W's: Black/
Bright Red

MSRP

\$170.00 (A) (M'S & W'S) ; \$150.00 (A) (YOUTH)

STAVANGER THERMAL VEST

AFV-1 | AFV-1W

Lightly insulated with Feather-Free synthetic down, and featuring our PFC-free water resistant coating, the Stavanger Thermal Vest is the ideal lightweight mid layer to grab as you head out the door.

Additional Features

- PFC-Free Water Repellent Finish
- Broken Fiber Polyfill
- Ergonomic Fit
- Adjustable Hem
- Audio System
- Inside Pocket

Fabrication

100% Nylon, 118 oz./yd² (USA) / 40gsm (CDN)

Men's Sizes

S-3XL (Black/Graphite S-5XL)

Women's Sizes

XS-2XL

Decoration Options



Technology



thermolex™
HIGH LOFT SYNTHETIC DOWN



WATERPROOF
LEVEL 1
600MM



BREATHABLE
LEVEL 1
1,000G/M²



WINDPROOF



+5°C TO -10°C
41°F TO 14°F

D/W/R Outer Shell

Provides an all-you-need basic level of water resistance for cool to cold wet weather conditions

Feather Free Thermal Shell

High loft synthetic insulation, designed to be lightweight and compactible



Packs into a pillow



M's: Black/Azure Blue
(Available in W's)

W's: Black/Bright Red
(Available in M's)



M's & W's: Black/
Graphite



M's & W's: Graphite/
Graphite



M's & W's: Navy/
Graphite

MSRP

\$130.00 (A)

NAUTILUS QUILTED HOODY

QXH-1 | QXH-1W

The Nautilus Quilted Hoodie repels wet weather while keeping you warm and dry inside thanks to its full-length internal stormflap and PFC-Free water repellent finish. A lightweight, practical weather partner, this quilted hoody is built with feather-free insulation and features an adjustable hem and hood. The elasticized cuffs ensure you stay warm to the core, ready to head out whatever the weather.

PFC-Free Water Repellent Finish

Provides ample water resistance in wet weather

Zippered Pockets

Provide secure storage for valuables

Elasticized Cuffs

Block cold air from entering the sleeve and offers a secure fit

Adjustable Full Coverage Thermal Hood

Conveniently adjusts for a custom fit to provide warmth and protection in cold weather

Internal Full-Length Stormflap

Guards against cold, rain and wind entering through the zipper

Internal Chest Pocket

Protects your valuables safely and securely with easy access

Adjustable Hem

Cuts out the chill and maximizes core warmth



WATERPROOF
LEVEL 1
600MM



WINDPROOF



+5°C TO -10°C
41°F TO 14°F

Additional Features

- Chin Saver
- Decoration Access

Fabrication

(Shell) 100% Polyester Pongee, 2.65 oz/yd² (USA) / 90gsm (CDN); (Lining) 100% Polyester

Men's Sizes

S-3XL (Black, Navy S-5XL)

Women's Sizes

XS-2XL (Black XS-3XL)

Decoration Options



MSRP

\$130.00 (A)

Technology



THERMALSHELL
TECHNOLOGY



M's & W's: Black



M's & W's: Dolphin



M's & W's: Navy



M's & W's: Azure Blue

NAUTILUS QUILTED JACKET

QX-1 | QX-1W

The Nautilus Quilted Jacket repels wet weather while keeping you warm and dry inside thanks to its full-length internal stormflap and PFC-Free water repellent finish. A lightweight, practical weather partner, this quilted jacket is built with feather-free insulation. The elasticized cuffs ensure you stay warm to the core, ready to head out whatever the weather.

Additional Features

- D/W/R Outer Shell
- Quilted Body with Ultra Soft Lining
- Internal Full-Length Stormflap
- Adjustable Hem
- Zippered Pockets
- Chin Saver
- Decoration Access

Fabrication

(Shell) 100% Polyester Pongee, 2.65 oz/yd² (USA) / 90gsm (CDN);
(Lining) 100% Polyester

Men's Sizes

S-3XL (Black, Navy S-6XL)

Women's Sizes

XS-2XL (Black, Navy XS-3XL)

Decoration Options



Technology



THERMALSHELL
TECHNOLOGY



WATERPROOF
LEVEL 1
600MM



BREATHABLE
LEVEL 1
1,000G/M²



WINDPROOF



+5°C TO -10°C
41°F TO 14°F

MSRP

\$110.00 (A)

PFC-Free Water Repellent Finish

Provides ample water resistance in wet weather

Feather Free Thermal Shell

High loft synthetic insulation, designed to be lightweight and compactable



Elasticized Cuffs

Block cold air from entering the sleeve and offers a secure fit

W's: Azure Blue
(Available in M's)

M's: Bright Red
(Available in W's)



M's & W's: Navy



M's & W's: Black

NAUTILUS QUILTED VEST

KXV-1 | KXV-1W

Add some warmth. For the ultimate in thermal layering convenience, simply throw on this ultra-light, quilted vest when the temperature takes a dip. A DWR water-repellent finish and synthetic down fill keeps your core warm and dry all day.

Additional Features

- D/W/R Outer Shell
- Quilted Body with Ultra Soft Lining
- Internal Full-Length Stormflap
- Adjustable Hem
- Zippered Pockets
- Chin Saver
- Decoration Access

Fabrication

(Shell) 100% Polyester Pongee, 2.65 oz/yd² (USA) / 90gsm (CDN);
(Lining) 100% Polyester

Men's Sizes

S-3XL (Black S-6XL) (Navy, Azure Blue S-5XL)

Women's Sizes

XS-2XL (Black, Navy XS-3XL)

Decoration Options



Technology



THERMALSHELL
TECHNOLOGY



WATERPROOF
LEVEL 1
600MM



BREATHABLE
LEVEL 1
1,000G/M²



WINDPROOF



+5°C TO -10°C
41°F TO 14°F

MSRP

\$85.00 (A)

PFC-Free Water Repellent Finish

Provides ample water resistance in wet weather

Feather Free Thermal Shell

High loft synthetic insulation, designed to be lightweight and compactable



W's: Bright Red
(Available in M's)

M's: Navy
(Available in W's)



M's & W's: Black



M's & W's: Azure Blue



NARVIK HYBRID JACKET

BRX-1 | BRX-1W

Ultra lightweight with maximum thermal efficiency - The Narvik Hybrid Jacket isolates and contains heat in damp and cold environments with a lightweight quilted body, bonded knit collar and sleeves. A PFC-Free durable water repellent finish on the main body helps repel water in damp conditions. Chin saver and adjustable hem with drawcord lets you adjust for maximum comfort on your hike up the hill or outdoor/indoor industrial settings.

NARVIK HYBRID JACKET

BRX-1 | BRX-1W

Internal Full-Length Stormflap
Guards against cold, rain and wind entering through the zipper

Chin Saver
Provides extra next to skin and wind protection

Knit Collar and Sleeve
For ultimate comfort and feel

Feather Free Thermal Shell
High loft synthetic insulation, designed to be lightweight and compactible

Articulated Action Shoulders
Provide optimal range of motion

Zippered Hand Warmer Pockets
For stowing personal items and keeping hands warm

Contoured Fit (W's)
Designed with an ergonomic, slim silhouette

Adjustable Hem with Drawcord
Provides a comfortable fit and maximizes core temperature control

D/W/R Outer Shell
Provides an all-you-need basic level of water resistance for cool to cold wet weather conditions



Additional Features

- PFC-Free Water Repellent Finish
- Quilted Thermal Shell
- Decoration Access

Fabrication

(Shell) 100% Nylon, 112 oz/yd² (USA) / 38gsm (CDN);
(Shell-Secondary) 100% Polyester Two Tone Melange Fleece,
10.91 oz/yd² (USA) / 370gsm (CDN)

Men's Sizes

S-3XL (Black/Dolphin Heather S-5XL)

Women's Sizes

XS-2XL

Technology



THERMALSHELL
TECHNOLOGY

Decoration Options



MSRP

\$130.00 (A)



M's & W's: Black/Dolphin Heather



M's & W's: Indigo/Indigo Heather

MONTSERRAT THERMAL VEST

PDV-1 | PDV-1W

Lightweight thermal efficiency. The Montserrat Vest helps you warm up in damp and cold environments with a lightweight quilted body and stretch side panels. A PFC-Free durable water repellent finish on the main body helps repel water in damp conditions.

Chin saver and adjustable hem with drawcord lets you adjust for maximum comfort. The Montserrat Thermal Vest is built with both regular and recycled polyester fabric inputs for a reduced environmental footprint.



MONTSERRAT THERMAL JACKET

PDX-1 | PDX-1W

Lightweight thermal efficiency. The Montserrat Jacket lets you warm up in damp and cold environments with a lightweight quilted body and stretch side panels. A PFC-Free durable water repellent finish on the main body helps repel water in damp conditions.

Chin saver and adjustable hem with drawcord lets you adjust for maximum comfort. The Montserrat Thermal Jacket is built with both regular and recycled polyester fabric inputs for a reduced environmental footprint.

MONTSERRAT THERMAL JACKET

PDX-1 | PDX-1W

Additional Features

- STORMTECH Thermolex™ High Loft Synthetic Down
- High-Performance Windproof Outer Shell
- Combination of Broken Fiberfil and Polyfill
- Contrast Single Layer Stretch Side Panels
- Adjustable Hem with Drawcord
- Elasticized Cuffs
- Zippered Hand Pockets with Brushed Tricot
- Internal Mesh Stash Pockets
- Internal Full-Length Stormflap with Chin Saver
- Decoration Access

Fabrication

(Shell) 55% Recycled Polyester/ 45% Polyester, 115 oz/yd² (USA) / 39gsm (CDN);
(Shell-Secondary): 92% Recycled Polyester/ 8% Elastane bonded with 100% Recycled Polyester
Polar Fleece, 8.11 oz/yd² (USA) / 275gsm (CDN);
(Lining) 55% Recycled Polyester/ 45% Polyester

Men's Sizes

S-3XL (Black/Granite, Granite/Black S-5XL)

Women's Sizes

XS-2XL (Black/Granite XS-3XL)

Decoration Options



Technology



MSRP

\$150.00 (A)

PFC-Free Durable Water Repellent Finish
Environmentally-friendly finish enhances waterproofing performance



Pure Earth by STORMTECH™
Made from Recycled Polyester for a reduced environmental footprint
55% RECYCLED POLYESTER



M'S: Black/Graphite
(Available in W'S)

W'S: Indigo/Midnight
(Available in M'S)



M's & W's: Granite/Black



M's & W's: Spruce/Mallard

MONTSERRAT THERMAL VEST

PDV-1 | PDV-1W

Additional Features

- STORMTECH Thermolex™ High Loft Synthetic Down
- High-Performance Windproof Outer Shell
- Combination of Broken Fiberfil and Polyfill
- Contrast Single Layer Stretch Side Panels
- Adjustable Hem
- Partial Elasticized Armhole Trim
- Zippered Hand Pockets with Brushed Tricot
- Internal Mesh Stash Pockets
- Decoration Access

Fabrication

(Shell) 55% Recycled Polyester/ 45% Polyester, 115 oz/yd² (USA) / 39gsm (CDN);
(Shell-Secondary): 92% Recycled Polyester/ 8% Elastane bonded with 100% Recycled Polyester
Polar Fleece, 8.11 oz/yd² (USA) / 275gsm (CDN);
(Lining) 55% Recycled Polyester/ 45% Polyester

Men's Sizes

S-3XL (Black/Granite, Granite/Black S-5XL)

Women's Sizes

XS-2XL (Black/Granite XS-3XL)

Decoration Options



Technology



MSRP

\$120.00 (A)

PFC-Free Durable Water Repellent Finish
Environmentally-friendly finish enhances waterproofing performance



Pure Earth by STORMTECH™
Made from Recycled Polyester for a reduced environmental footprint
55% RECYCLED POLYESTER



M'S: Indigo/Midnight
(Available in W'S)

W'S: Spruce/Mallard
(Available in M'S)



M's & W's: Black/Granite



M's & W's: Granite/Black

Holiday Gift Guide 2023

BAGS & ACCESSORIES

Take it to the streets. Combining the easy tranquility of the outdoors and the edgy pace of city life, our fashion forward street styles take your journey to the next level.

1. OASIS 24 PACK COOLER BAG
MCX-1

2. OREGON 24 COOLER BACKPACK
RGX-1

3. SALT SPRING COOLER BAG
CFR-2

4. MAGELLAN COOLER BAG 16 CAN
ZPX-1

5. SCIRROCO CAP
FPX-1

6. VINTAGE KNIT BEANIE
BTV-1

7. KLONDIKE FLEECE BLANKET
FBX-1





1

2

5

6

4

7

OREGON 24 COOLER BACKPACK

RGX-1

On-point practicality, the Oregon 24 Cooler Backpack is a classically styled, durable, and waterproof backpack that embraces spontaneity. Throw your favorite refreshments into the spacious main compartment, and add your personal accessories into the front pocket. Adjust the ergonomic shoulder straps and feel the comfort of the airflow-padded back panel. You're all set for adventure.

Large Main Zippered Opening
Allows adequate space for a variety of contents

3 External Storage Zippered Compartments
Ensures your contents are organized, safe and secure while remaining within easy reach

Dual Side Mesh Pockets
Large side mesh pockets to keep water bottles, snacks and smaller items visible and close at hand

Durable Reinforced Fabric
A waterproof material that is both durable and abrasion resistant

Padded and Ventilated Back Panel
Promotes airflow to keep back and shoulders cool and comfortable

Ergonomic, Adjustable Shoulder and Sternum Strap
Adjust to suit both your supreme comfort and performance



Additional Features

- Heavy Duty Carry Handle
- Easy Clean Food Safe Lining
- Use with Stormtech Ice Pack

Fabrication (Shell) 100% Polyurethane, (Shell-Secondary) 100% PVC, Lining: PVC and Polyester

Sizing 19"H x 10"W x 7.5"D

Volume 23 Liters/1,404 Cubic Inches (24 Cans)

Decoration Options **HT** **LP**

MSRP **\$150.00 (A)**



SALT SPRING COOLER BAG

CFR-2

While the outdoors restores your inner balance, the Salt Spring Cooler Bag will keep your refreshments crisp and fresh in the insulated, leak-proof compartment. Enjoy an icy pick-me-up when you pause for thought; then simply throw the comfy adjustable strap over your shoulder as you head off again.

Carry Handles

For practical ease of use



Large Zippered Insulated Leak-Proof Storage Compartment

Provides a zippered, leak-free cooling environment for all of your refreshments

External Pocket

Provides quick in-and-out convenience for items that require frequent use

Adjustable Shoulder Strap

Adjust to suit both your comfort and performance

Additional Features

- 16 Can Capacity
- Use with STORMTECH Ice Pack

Fabrication

100% PVC

Sizing

12" H x 12.75" W x 8.75" D

Volume

15 Liters / 915 Cubic Inch (16 Cans)

Decoration Options



MSRP

\$160.00 (A)



Keep contents cold and fresh longer with this durable and reusable cooler pack.

ICE-1 MSRP \$8.00 (A)



Black/Dolphin



Azure Blue/Black



White/Grey

OASIS 24 PACK COOLER BAG

MCX-1

While the outdoors restores your inner balance, the Oasis 24 Pack Cooler will keep your refreshments crisp and fresh in the insulated, leak-proof compartment. Features include an easy access, extra long water repellent zipper and compression straps to secure contents.

Carry Handles

Convenient carrying option when you need to grab and go

Large Main Zippered Opening

Allows adequate space for a variety of contents

External Pocket

Provides quick in-and-out convenience for items that require frequent use

Durable Reinforced Fabric

A waterproof material that is both durable and abrasion resistant

Fully Leak-Proof Insulated Lining

Engineered to hold in the cold and keep food and beverages chilling for a full day's adventure



Additional Features

- Easy Clean Food Safe Lining
- Use with Stormtech Ice Pack

Fabrication

(Shell) 100% Polyurethane, Shell-Secondary: 100% PVC, (Lining) PVC and Polyester

Sizing

14.5" H x 11" W x 9" D

Volume

20 Liters/1,220 Cubic Inches (24 Cans)

Decoration Options



MSRP

\$80.00 (A)



Graphite/Black



Azure Blue/Black



Red/Black



White/Grey

MAGELLAN COOLER BAG 30 CAN

ZPX-2

Additional Features

- 100% Waterproof Fabric
- PVC Free
- Phthalate Free
- High-Performance Insulation
- Leak-Proof Removable Hard Liner
- Removable Multi-Use Tray Insert
- Front Zippered Pocket
- Padded Adjustable Shoulder Strap
- Side Carry Handles

Fabrication

100% Polyester TPU coated

Sizing

11.75" H x 14.6" W x 9" D

Volume

22 Liters / 1,342 Cubic Inch (30 Cans)

Decoration Options



MSRP

\$140.00 (A)



Azure Blue/Navvy



White/Grey

Removable Wipe Clean Food-Safe Interior
Easy to keep clean

Mesh Side Pockets
Flexible extra storage for adventure essentials

Zipper-Free Flip Lid Main Opening with Tab Lock Closure
Quick access to contents without a zipper



Dolphin/Black



Keep contents cold and fresh longer with this durable and reusable cooler pack.
ICE-1 MSRP \$8.00 (A)

MAGELLAN COOLER BAG 16 CAN

ZPX-1

Additional Features

- 100% Waterproof Fabric
- PVC Free
- Phthalate Free
- High-Performance Insulation
- Leak-Proof Removable Hard Liner
- Removable Multi-Use Tray Insert
- Front Zippered Pocket

Fabrication

100% Polyester TPU coated

Sizing

11.75" H x 11.5" W x 6.25" D

Volume

11 Liters / 671 Cubic Inch (16 Cans)

Decoration Options



MSRP

\$110.00 (A)



Azure Blue/Navvy



Dolphin/Black

Removable Wipe Clean Food-Safe Interior
Easy to keep clean

Mesh Side Pockets
Flexible extra storage for adventure essentials

Zipper-Free Flip Lid Main Opening with Tab Lock Closure
Quick access to contents without a zipper

Padded Adjustable Shoulder Strap
Allows a comfortable, custom fit



White/Grey



Keep contents cold and fresh longer with this durable and reusable cooler pack.
ICE-1 MSRP \$8.00 (A)



NORSEMAN ROLL TOP PACK

RTB-1

You can take on anything with the weather resistant Norseman Roll Top Pack. It's robust, yet lightweight. Organized, yet versatile. From the office to the trailhead, the zippered main compartment facilitates easy organization and access, while the roll top closure forms a tight protective seal. Ensconced in the laptop sleeve, your computer is protected from hard impacts. You'll be in your element, while this pack protects your belongings from them.

NORSEMAN ROLL TOP PACK

RTB-1

Ergonomic Adjustable Shoulder and Sternum Strap

Adjust to suit both your supreme comfort and performance

17" Laptop Compartment

Secures your laptop in this designated padded space

Waterproof Fabric

Reinforced PVC fabric resists water penetration to successfully protect your valuables

Roll Top Closure

Forms a tight protective seal to safeguard your belongings

Suspended Laptop Sleeve

Protects your laptop against hard impacts and surfaces

Padded and Thermal Moulded Back Panel

Provides rigidity, airflow and superior comfort while wearing

Wheeled Luggage Compatibility

Permits your backpack to slide over a telescopic luggage handle smoothly



Additional Features

- Large Main Compartment
- Large Zippered Device and Stationary Compartment
- RFID Pocket with Waterproof Zipper
- Front Pocket with Waterproof Zipper
- Compression Side Straps
- Two Side Zip Pockets with Internal Mesh Sleeve



17" MAXIMUM
DEVICE SIZE



RFID
BLOCKER



WATERPROOF
FABRIC

Fabrication

(Shell) 100% Polyurethane
(Lining) 100% Polyester

Sizing

19" H x 11" W x 7" D

Volume

24 Liters / 1,464 Cubic Inch

Decoration Options



MSRP

\$180.00 (A)



Black



Graphite



SARGASSO BACKPACK

PTR-1

The roll-top pack with built-in padded protection. The ventilated back panel of the Sargasso Backpack brings breathable relief as the temperatures rise, while reinforced PVC fabric provide protection from the elements. Features ergonomic and adjustable shoulder/back pack straps for comfort and performance.

SARGASSO BACKPACK

PTR-1

Roll-Top Closure with Adjustable Straps

The easy access opening rolls into a tight, protective seal to safeguard belongings

Waterproof Fabric

Reinforced PVC fabric resists water penetration to successfully protect your valuables

External Zippered Pocket

Provides quick in-and-out convenience for items that require frequent use

Reinforced Carry Handle

A durable carry handle when you need to grab and go

Ergonomic Adjustable Shoulder and Sternum Strap

Adjust to suit both your supreme comfort and performance

Back Padding With Breathable Mesh

Allows for movement of cool air on warm days



Additional Features

Internal Zippered Pocket



WATERPROOF FABRIC

Fabrication

100% Polyester PVC coated

Sizing

20"H x 11"W x 5"D (rolled);
24"H x 11"W x 5"D (unrolled)

Volume

20 Liters / 1,220 Cubic Inch

Decoration Options



MSRP

\$70.00 (A)



Black



Graphite



Azure Blue

AERONAUT BACKPACK 25

VRN-1



Intelligent weather protection. The Aeronaut 25 Waterproof Backpack protects your laptop and other valuables by keeping the wet out with waterproof zipper closures and reinforced waterproof layer. With ergonomic, adjustable shoulder and sternum straps as well as a padded airflow back panel. This pack keeps you comfortably cool and organized. The Aeronaut Backpack 25 also features an RFID blocking pocket and zippered expansion panel to increase capacity from 25L to 35L when you need it.

Padded, Ergonomic and Stowable Adjustable Shoulder Straps with Rolled Edge for Comfort

Conveniently stow these ultra comfort shoulder straps away when needed

Ultra-Soft Padded Air Mesh Back Panel

Promotes extra comfort and airflow to keep back and shoulders cool

Adjustable Sternum Strap

Adjust to suit both your supreme comfort and performance

Rolling Luggage Compatible

For ease of travel through streets and airports

Easy-Access Laptop and Tablet Compartment

Conveniently access your devices for airport security and on-the-go use

Large Main Opening with 2-Way Waterproof Zipper

Allows for easy access and adequate space for a variety of contents

Polyester Taffeta Lining with Polygiene® Freshness Technology

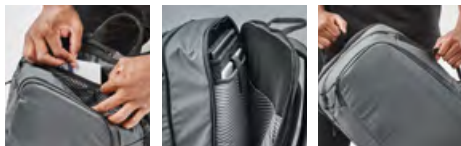
StayFresh technology helps keep the interior free from odor-causing bacteria

Waterproof Fabric

Resists water penetration to successfully protect your valuables

Expands to 35L

Provides you with extra storage room when you need it the most



16" MAXIMUM
DEVICE SIZE



RFID
BLOCKER



WATERPROOF
FABRIC

Additional Features

- Large Accessories Pocket with Secure Zipper Closure
- RFID Blocking Pocket
- TSA Carry-On Size
- Reinforced Top and Side Carry Handles
- Zippered Water Bottle Pocket
- Internal Zippered Mesh Pocket
- Internal Key Clip
- Fits Up to 16" Laptop

Fabrication

(Shell) 100% Polyester TPU coated
(Lining) 100% Polyester

Sizing

19" H x 12" W x 6" D
19" H x 12" W x 9" D (Expanded)

Volume

25 Liters / 1,525 Cubic Inch
35 Liters / 2,136 Cubic Inch (Expanded)

Decoration Options



MSRP

\$150.00 (A)



Black



Graphite

NAVARRO BACKPACK 25

WDX-1

The Navarro Backpack delivers supreme practicality and functionality with intelligent design. Its carry handle and rolling luggage compatibility makes it adaptable from cities to airports. The 14" padded laptop and internal organization system keeps your valuables safe, and the padded air mesh back panel and straps promote excellent airflow.



Ergonomic and Padded Adjustable Shoulder Straps with Gear Loops
Adjust to suit both your supreme comfort and on-the-go functionality

Reinforced Carry Handle
A durable carry handle when you need to grab and go

Large Main Opening with 2-Way Waterproof Zipper
Allows for easy access and adequate space for a variety of contents

Polyester Taffeta Lining with Polygiene® Freshness Technology
StayFresh technology helps keep the interior free from odor-causing bacteria

Mesh Side Pockets
Flexible extra storage for your water bottle and other adventure essentials

Waterproof Fabric
Resists water penetration to successfully protect your valuables

Side Compression Straps
Easily adjustable straps help keep contents securely packed

Rolling Luggage Compatible
For ease of travel through streets and airports

Padded Air Mesh Back Panel
Promotes airflow to keep back and shoulders cool



Additional Features

- Dual Front Zippered Pockets
- Adjustable Sternum and Waist Strap
- Easy-Access Suspended Laptop Compartment
- Fits Up to 14" Laptop
- Padded Tablet Pocket
- Internal Organization System
- Decoration Access

Fabrication

(Shell) 100% Polyurethane;
(Shell - Secondary) 100% PVC Tarpaulin;
(Lining) 100% Polyester

Sizing

18.5" H x 12.5" W x 5.5" D

Volume

25 Liters / 1,525 Cubic Inch

Decoration Options



MSRP

\$140.00 (A)



Black



Graphite

TOLUCA BACKPACK

KNX-1

The Toluca Backpack delivers supreme practicality and functionality with intelligent design. Its carry handle and rolling luggage compatibility make it adaptable from cities to airports. The 15" padded laptop and internal organization system keep your valuables safe, and the padded air mesh back panel and straps promote excellent airflow.

Additional Features

- Fits up to 15" Laptop
- PVC Free
- Phthalate Free
- Document Stash Pocket
- Internal Organization System
- Rolling Luggage Compatible
- Padded and Brushed Tricot Lined Tablet Sleeve
- Decoration Access

Fabrication

100% Recycled Polyester 600D PU backing

Sizing

17.5" H x 11" W x 6.5" D

Volume

20.5 Liters / 1,251 Cubic Inch

Decoration Options



Technology



15" MAXIMUM
DEVICE SIZE

MSRP

\$160.00 (A)

Removable Insulated Food- Safe Pack with Zipper Closure
Keeps food insulated or can be removed when not necessary to save space



Pure Earth by STORMTECH™
Made from Recycled Polyester for a reduced environmental footprint
100% RECYCLED POLYESTER

Reinforced Carry Handle
For hand-carrying and hanging

Padded Air Mesh Back Panel and Straps
Promotes airflow across shoulders and back to keep you cool



Graphite/Black



HEDMARK COMMUTER BACKPACK

KNX-2

Jet setter, trendsetter, or both, the Hedmark Commuter Backpack is packed with well-considered features. The 17" padded laptop protection, secure front zippered pocket, and internal organization system are on-the-go solutions for corporate commuters and digital nomads. Padded air mesh back panel and straps keep you cool, and the carry handle and rolling luggage compatibility offer commuting versatility.

Additional Features

- Fits up to 17" Laptop
- Reinforced Carry Handle
- Internal Organization System
- Document Stash Pocket
- Side Carry Handle
- Rolling Luggage Compatible
- PVC Free
- Phthalate Free
- Decoration Access

Fabrication

(Shell) 100% Recycled Polyester 600D PU backing;
(Shell-Secondary) 100% Polyurethane

Sizing

18" H x 11" W x 6.5" D

Volume

21 Liters / 1,287 Cubic Inch

Decoration Options



Technology



17" MAXIMUM
DEVICE SIZE

MSRP

\$140.00 (A)

Padded Air Mesh Back Panel and Straps
Promotes airflow across shoulders and back to keep you cool

Pure Earth by STORMTECH™
Made from Recycled Polyester for a reduced environmental footprint
100% RECYCLED POLYESTER

Front Zippered Pocket
Secure storage for valuables

Graphite/Black



MEDUSA BACKPACK

LBR-1

The digital age demands dynamic solutions, and the Medusa Backpack is precisely that. Clean lines combine with versatility. This design allows you to effortlessly transform from an over-the-shoulder-attaché to a backpack as you move through city centers and deal-cutting business lounges. All the while, your laptop is held securely in a suspended sleeve. The Medusa Backpack also features an easy-access flapped-lid opening with magnetic closures.

Additional Features

- Polyester Taffeta Lining with Polygiene® Freshness Technology
- Document Stash Pocket
- Front Organization Pocket with Key Clip
- Side Entry Zippered Stash Pocket
- Internal Zippered Mesh Pocket
- Reinforced Carry Handle
- Padded and Brushed Tricot Lined Suspended Laptop Sleeve
- Rolling Luggage Compatible
- Fits Up to 16" Laptop
- Decoration Access

Fabrication

(Shell) 100% Nylon PU coated;
(Shell-Secondary) 100% Nylon PVC coated;
(Lining) 100% Polyester

Sizing

17.5" H x 11.5" W x 6" D

Volume

20 Liters / 1,220 Cubic Inch

Decoration Options



16" MAXIMUM
DEVICE SIZE



Black



Graphite

Ergonomic and Padded Air Mesh Back Panel and Straps
Adjust to suit both your supreme comfort and on-the-go functionality



Flapped Lid with Zippered Pocket and Magnetic Closure
Easily access your belongings when you are on the go

Side Mesh Water Bottle Pockets
Helps keep water bottles, snacks, and smaller items visible and close at hand

MSRP

\$100.00 (A)

MERIDAN TOTE BACKPACK

LBR-2

Meridan Tote Backpack is the epitome of throw-over-your-shoulder convenience. It is lightweight and designed with mindful on-the-go practicality. It also hosts a multitude of secure storage solutions for your valuables and essential documents. The cleverly designed internal organization system keeps your accessories firmly in place when traveling for work or leisure.

Additional Features

- External Front and Back Stash Pocket
- Front Organization Pocket with Key Clip
- Padded and Brushed Tricot Lined Suspended Laptop Sleeve
- Internal Mesh Water Bottle Pocket
- Document Stash Pocket
- Rolling Luggage Compatible
- Fits Up to 16" Laptop
- Decoration Access

Fabrication

(Shell) 100% Nylon PU coated;
(Shell-Secondary) 100% Nylon PVC coated;
(Lining) 100% Polyester

Sizing

16" H x 12" W x 5" D

Volume

16 Liters / 976 Cubic Inch

Decoration Options



16" MAXIMUM
DEVICE SIZE



Black



Graphite

Polyester Taffeta Lining with Polygiene® Freshness Technology
StayFresh technology helps keep the interior free from odor-causing bacteria

Reinforced and Padded Carry Handles
Durable carry handles when you need to grab and go

Multi-Use, Adjustable and Removable Shoulder Strap
Provides you with multiple carrying options to personalize your style



MSRP

\$90.00 (A)

MADISON COMMUTER PACK

BPX-5

The city commute demands a pack rich in practicality, durability and excellent organizational skills. The Madison Commuter Pack delivers precisely that, as you journey between home and office. Your smaller valuables will find a safe-haven within the thermal moulded compartment, while your computer is protected from hard knocks, courtesy of the built-in suspended laptop sleeve. With generous storage space for all your mobile office essentials, the Madison is the intelligent commuting solution.

Integrated Thermal Moulded Storage Case

Maximizes comfort by providing rigidity and promoting airflow

Padded and Thermal Moulded Back Panel

Provides rigidity, airflow and superior comfort while wearing

Wheeled Luggage Compatibility

Permits your backpack to slide over a telescopic luggage handle smoothly

Suspended Laptop Sleeve

Protects your laptop against hard impacts and surfaces

Large Main Compartment

Allows adequate space for a variety of contents



15" MAXIMUM
DEVICE SIZE

Additional Features

- Fits Up to 15" Laptop
- Ergonomic Designed Shoulder Straps
- Adjustable Sternum Strap
- Two Side Zip Pockets with Internal Mesh Sleeve
- Front Organization Pocket
- Decoration Access

Fabrication

(Shell) 100% Polyester 600D,
(Shell-Secondary) 100% Polyester PVC coated

Sizing

20" H x 11.5" W x 8" D

Volume

30 Liters/1,830 Cubic Inch

Decoration Options



MSRP

\$160.00 (A)



Black

Carbon

YALETOWN COMMUTER PACK

BPX-4

A bag as city savvy as its name sake. For all commutes of life, this pack is the practical answer for professionals and scholars alike. Three main zip-up compartments and a thoughtfully laid out internal organization system add some stress-free ease to your daily tasks.

Additional Features

- Three Main Zip-Up Compartments
- Hidden Front Zip Pocket
- Internal Organizer for an Office on the Go

Fabrication

(Shell) 100% Polyester 600D,
(Shell-Secondary) 100% Polyester PVC coated

Sizing

18" H x 12" W x 7" D

Volume

22 Liters / 1,342 Cubic Inch

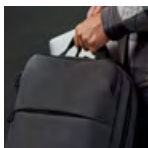
Decoration Options



17" MAXIMUM
DEVICE SIZE

MSRP

\$140.00 (A)



Black

Dual Webbing Carry Straps

Conveniently choose either side carry handle when you need to grab and go

Padded Air Mesh Back Panel

Promotes airflow to keep back and shoulders cool

Fits Up to 17" Laptop

Padded protection for full size laptops



Carbon

TRINITY ACCESS PACK

BPX-3

Compact yet roomy, the Trinity Access Pack has all bases covered for your daily commute. An easy access padded laptop compartment, dedicated tablet sleeve and dual side mesh beverage pockets are just a few of the handy features you will find on this bag.

Additional Features

- Padded and Brushed Tricot Lined Tablet Sleeve
- Large Main Compartment for Books, Binders and Files
- Dual Side Mesh Beverage Pockets

Fabrication

(Shell) 100% Polyester 600D,
(Shell-Secondary) 100% Polyester PVC coated

Sizing

17" H x 12" W x 5.75" D

Volume

20 Liters / 1,220 Cubic Inch

Decoration Options



15" MAXIMUM
DEVICE SIZE



RFID
BLOCKER

MSRP

\$110.00 (A)



Black

Breathable Air-Flow Padded Back Panel

Promotes airflow to keep back and shoulders cool

RFID Blocking Material On Front Side Pocket

Intelligently protects your data from wireless theft

Fits Up to 15" Laptop
Padded protection for full size laptops



Carbon

ROAD WARRIOR COMPUTER PACK

CMT-3

The digital age demands dynamic solutions, and the Road Warrior Computer Pack is precisely that. Clean lines combine with versatility. The design allows you to effortlessly transform from an over-the-shoulder-attaché to a backpack as you move through city centers and deal-cutting business lounges. All the while, your laptop is held securely in a suspended sleeve. Adaptability is the name of the game.



Graphite/Black



17" MAXIMUM
DEVICE SIZE

Additional Features

- Convertible Design
- Internal Organization System
- Shoulder Strap Stash Pocket

Fabrication

(Shell) 100% Polyester PU coated
(Lining) 100% Polyester

Sizing

18.5" H x 12.5" W x 5" D

Volume

19.5 Liters / 1,190 Cubic Inch

Decoration Options



MSRP

\$140.00 (A)

QUITO SLING BACKPACK

CMT-4

Quito Sling Backpack with padded adjustable shoulder strap is the epitome of throw-over-your-shoulder convenience. It is lightweight and designed with mindful on-the-go practicality. It also hosts a multitude of secure storage solutions for your valuables and essential documents. The cleverly designed internal organization system keeps your accessories firmly in place when traveling for work or leisure.



Additional Features

- PVC Free
- Phthalate Free

Fabrication

(Shell) 100% Polyester PU backing;
(Shell-Secondary) 100% Polyester PU coated

Sizing

12" H x 8" W x 3.25" D

Volume

5 Liters / 312 Cubic Inch

Decoration Options



MSRP

\$60.00 (A)



EQUINOX 30 DUFFEL BAG

CTX-2

There is no need to leave any of your gear behind with the Equinox 30 Duffel Bag. With a large main zippered opening, generous pocket space and a large inside organizational zip mesh pocket, this duffel has space for all your essential items. Swap to a backpack by merely adjusting the ergonomic shoulder straps, or quickly grab the side carrying handles when passing through airport security.

EQUINOX 30 DUFFEL BAG

CTX-2

Large Main Zippered Opening

Allows adequate space for a variety of contents

Large Zippered End Pockets

Ensure your contents are organized, safe and secure while remaining within easy reach

Adjustable and Ergonomic Shoulder Straps

Adjust to suit both your supreme comfort and on-the-go functionality

2-in-1 Duffel and Backpack

Conveniently switch between carrying options as and when your needs change

Dual Side Carrying Handles

Conveniently choose either side carry handle when you need to grab and go

Compression Straps

Adjust these straps to reduce bulk and secure contents

Waterproof Fabric Base

Reinforced PVC base fabric resists water penetration to successfully protect your valuables



WATERPROOF
FABRIC

Additional Features

- Internal Zip Mesh Pockets
- ID Sleeve
- Decoration Access

Fabrication

(Shell) 100% Polyester 600D,
(Shell-Secondary) 100% PVC
(Lining) 100% Polyester

Sizing

25" L x 8.5" W x 9.5" H

Volume

30 Liters / 1,830 Cubic Inch

Decoration Options



MSRP

\$140.00 (A)



Black



Carbon

NARVIK WATERPROOF DUFFEL 35L

FCX-2

The 35 litre Narvik Waterproof Duffel provides large capacity air-tight storage in extreme wet weather conditions. Features include an air-tight waterproof zipper and ultra-sonically welded seams.

Additional Features

- PVC Free, Phthalate Free
- Heat Welded Waterproof Zipper Main Opening with Zipper Garage
- Reinforced Strap Anchor Panels

Fabrication

100% Thermoplastic Polyurethane

Sizing

22" L x 11" W x 11" H

Volume

35 Liters / 2,090 Cubic Inch

Decoration Options



ULTRASONIC
WELDED
SEAMS



WATERPROOF
FABRIC

MSRP

\$120.00 (A)



Granite/Black

Padded Carry Handles

Convenient carrying when you need to grab and go

100% Waterproof TPU Fabric with Heat Welded Seams

Ultrasonic technology creates welded waterproof against the elements

ID Sleeve

Secure storage for your ID

Detachable Shoulder Strap

Versatility at your fingertips

NARVIK WATERPROOF DUFFEL 55L

FCX-3

The 55 litre Narvik Waterproof Duffel provides large capacity air-tight storage in extreme wet weather conditions. Features include an air-tight waterproof zipper and ultra-sonically welded seams.

Additional Features

- PVC Free, Phthalate Free
- Reinforced Strap Anchor Panels
- Detachable Shoulder Strap
- ID Sleeve

Fabrication

100% Thermoplastic Polyurethane

Sizing

26" L x 13" W x 13" H

Volume

55 Liters / 3,451 Cubic Inch

Decoration Options



ULTRASONIC
WELDED
SEAMS



WATERPROOF
FABRIC

MSRP

\$140.00 (A)



Granite/Black

100% Waterproof TPU Fabric with Heat Welded Seams

Ultrasonic technology creates welded waterproof against the elements

Padded Carry Handles

Convenient carrying when you need to grab and go

Heat Welded Waterproof Zipper Main Opening with Zipper Garage

Air-tight closure prevents water from penetrating contents of bag

SOHO DUFFEL

TBX-1

You'll keep looking over your shoulder, in a good way. This statement piece says spontaneity as you cruise city streets with the extra-long carry straps slung effortlessly over your shoulder. Its large main zippered opening with adjustable side straps and multiple external and internal pockets, ensures you have everything you need for big city spontaneity.

Additional Features

- Large Main Zippered Opening
- Adjustable Side Straps
- 3 Internal Pockets
- Decoration Access

Fabrication

(Shell) 100% Polyester 600D PU coated
(Shell-Secondary) 100% Polyester 600D PVC coated
(Lining) 100% Polyester

Sizing

11" H x 15" W x 9" D

Volume

24 Liters / 1,485 Cubic Inch

Decoration Options



Waterproof Fabric Base
Reinforced PVC base fabric resists water penetration to successfully protect your valuables

MSRP

\$55.00 (A)



Extra Long Carry Handles

Allow the duffel to be easily and comfortably slung over the shoulder

External Zippered Pocket

Provides quick in-and-out convenience for items that require frequent use

Dolphin/Black

SOHO GEAR BAG

TBX-2

As sunlight dapples city streets, radiate confidence knowing you are geared to embrace summer madness. With grab-and-go carry handles and adjustable strap, the Soho Gear Bag allows for quick, convenient travel. The zippered large main opening and external pocket facilitate easy access, while 3 internal pockets and a waterproof base protect your more fragile gear.

Additional Features

- Large Main Zippered Opening
- Adjustable Side Straps
- 3 Internal Pockets
- Adjustable Shoulder Strap
- Decoration Access

Fabrication

(Shell) 100% Polyester 600D PU coated
(Shell-Secondary) 100% Polyester 600D PVC coated
(Lining) 100% Polyester

Sizing

11" H x 22" W x 9" D

Volume

35 Liters / 2,178 Cubic Inch

Decoration Options



Waterproof Fabric Base
Reinforced PVC base fabric resists water penetration to successfully protect your valuables

MSRP

\$65.00 (A)



Carry Handles

Convenient carrying option when you need to grab and go

External Zippered Pocket

Provides quick in-and-out convenience for items that require frequent use

Dolphin/Black

STAVANGER QUILTED DUFFEL

QBX-1

Secure your travel essentials with lightweight padded protection. The Stavanger Quilted Duffel is designed with an extra-long access zipper attached to compression straps, so you can adjust to the load size. This statement piece says spontaneity as you cruise city streets with the extra-long carry straps slung effortlessly over your shoulder. Features a water-repellent quilted outer shell, external and internal pockets, ensures you have everything you need for big city spontaneity. Pairs with our Stavanger series of thermal jackets and vests.

Additional Features

- 4 Internal Pockets
- Side Compression Straps
- External Zippered Pocket
- Removable, Adjustable Shoulder Strap
- Waterproof Fabric Base
- Decoration Access

Fabrication

(Shell) 100% Nylon
(Shell-Secondary) 100% Polyester PVC coated
(Lining) 100% Polyester

Sizing

13" H x 19" W x 9" D

Volume

36 Liters / 2,196 Cubic Inch

Decoration Options



MSRP

\$90.00 (A)



Black

Carry Handles

Convenient carrying option when you need to grab and go

Large Main Zippered Opening
Allows adequate space for a variety of contents

Quilted Polyfill Shell

Provides uncomplicated protection for your bag's contents



Graphite

INDIO CINCH BAG

QSB-1

The water repellent Indio Cinch Bag will rally your bag's possessions together while you go about the job of living. Its drawstring functionality provides easy access to your contents, while the quilted polyfill shell protects them. And when you're done, the soft touch, compactible design is engineered to pack down. Simple and effective, with no fuss. Just as the name implies.

Fabrication

(Shell) 100% Nylon, 1.09 oz/yd² (USA) / 37gsm (CDN);
(Lining) 100% Polyester

Sizing

15"H x 11.5"W x 3.5"D

Volume

Volume: 9.89 Liters/603 Cubic Inc

Decoration Options



MSRP

\$25.00 (A)

Drawstring Closure
Delivers a simple, yet highly effective open and close mechanism

PFC-Free Water Repellent Finish

Provides ample water resistance in wet weather

Quilted Polyfill Shell

Provides uncomplicated protection for your bag's contents



Black

STAVANGER QUILTED BACKPACK

QBX-3

Padded protection for your travel essentials, the Stavanger Quilted Backpack has all bases covered for your daily commute. An easy-access padded laptop compartment and a water-repellent quilted outer shell are just a few of the handy features you will find on this pack which pairs perfectly with our Stavanger series thermal collection.

Additional Features

- Quilted Polyfill Shell
- Secure Storage Compartments
- Decoration Access

Fabrication

(Shell) 100% Nylon
(Lining) 100% Polyester

Sizing

16.5" H x 11" W x 5.5" D

Volume

16 Liters / 976 Cubic Inch

Decoration Options



15" MAXIMUM
DEVICE SIZE

MSRP

\$90.00 (A)



Black



Ergonomic Adjustable Shoulder Straps

Adjust to suit both your supreme comfort and on-the-go functionality

15" Laptop Compartment

Secures your laptop in this designated padded space

Large Main Zippered Opening

Allows adequate space for a variety of contents

Graphite

STAVANGER QUILTED WAIST BAG

QBX-2

Designed for padded protection, the Stavanger Quilted Waist Bag is an inconspicuous and organized way to protect your valuables on the go. Consisting of three zipper compartments, this travel companion features a water-repellent quilted body and adjusts to sit comfortably around your waist. It's out of sight so you can free your mind of worry. Accessorizes perfectly with our Stavanger collection of jackets and vests.

Additional Features

- Zippered Front Pocket
- Internal Zippered Pocket

Fabrication

(Shell) 100% Nylon
(Lining) 100% Polyester

Sizing

6" H x 10" W x 1.5" D

Volume

1.5 Liters / 91 Cubic Inch

Decoration Options



MSRP

\$30.00 (A)



Black



Splash Resistant Zippered Main Compartment

Prevents damage to your essentials by keeping moisture out

Quilted Polyfill Shell

Provides uncomplicated protection for your bag's contents

Adjustable Waist Belt
Adjustable waist belt allows for maximum personal comfort

Graphite



CUPERTINO LAPTOP SLEEVE 14

LVX-1

Welcome to the personal travel assistant that securely stows your laptop and travel documents. Whether for business or pleasure, travel is a lot more enjoyable and stress-free if you're organized. With an external zippered accessory pocket, the durable Cupertino allows you to confidently traverse the globe knowing that your device is safe and secure.

CUPERTINO LAPTOP SLEEVE 14
LVX-1

- Additional Features**
- Ultra-Padded Interior
 - Lined with Brushed Tricot
 - Decoration Access

Fabrication (Shell) 100% Polyester 600D;
(Lining) 100% Polyester

Sizing 9.5" H x 13.75" W x 0.75" D

Volume 1.6 Liters / 98 Cubic Inch

Decoration Options **E** **HT** **LP**

MSRP \$30.00 (A)



Extended Heavy Duty 2-Way Zipper Closure
Easily store and access your laptop

External, Expandable Zippered Accessories Pocket
Protect and stores your valuables safely and securely



Carbon

Black

Fits Up to 14" Laptop
Fits most laptop brands

CUPERTINO LAPTOP SLEEVE 16
LVX-2

- Additional Features**
- Ultra-Padded Interior
 - Lined with Brushed Tricot
 - Decoration Access

Fabrication (Shell) 100% Polyester 600D
(Lining) 100% Polyester

Sizing 10.75" H x 15.5" W x 0.75" D

Volume 2 Liters / 125 Cubic Inch

Decoration Options **E** **HT** **LP**

MSRP \$35.00 (A)



External, Expandable Zippered Accessories Pocket
Protect and stores your valuables safely and securely

Extended Heavy Duty 2-Way Zipper Closure
Easily store and access your laptop



Carbon

Black

Fits Up to 16" Laptop
Fits most laptop brands

Holiday Gift Guide 2023

HEADWEAR & ACCESSORIES



VINTAGE KNIT BEANIE

BTV-1

Keep your head in the game. Fearlessly take on wintery days with this roll-cuff, stretch fit technical beanie.

Additional Features

- Soft and Warm Acrylic Knit Construction
- Stretch Fit
- Roll-Cuff Design

Fabrication

100% Acrylic

Sizing

One Size

Decoration Options



MSRP

\$18.00 (A)



Dolphin



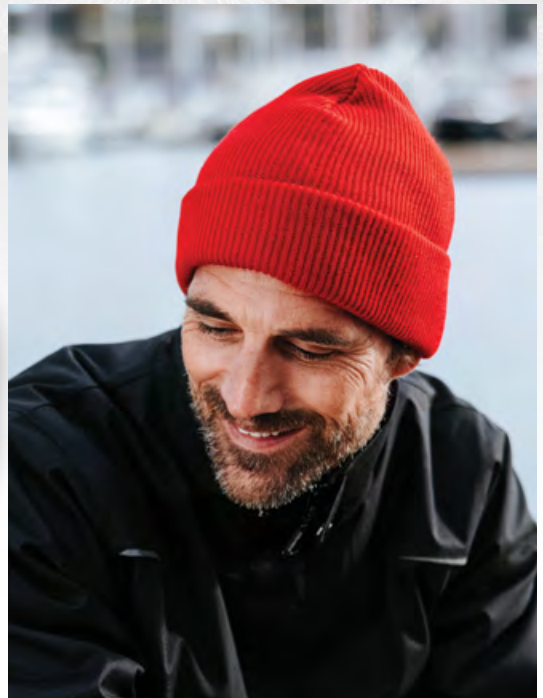
Black



Navy



Bright Red



NOVARA KNIT BEANIE

BTC-1

The stretch fit beanie that works at keeping you warm with its soft, acrylic knit construction. This heathered fine gauge knit beanie is a top performer in chilly conditions.

Additional Features

- Soft and Warm Acrylic Knit Construction
- Stretch Fit
- Heathered Design

Fabrication

80% Acrylic, 20% Nylon

Sizing

One Size

Decoration Options



MSRP

\$14.00 (A)



Red Heather



Carbon Heather



Blue Heather



Kiwi Heather





DOCKSIDE KNIT BEANIE

BTK-1

Sport a classic look with this fine gauge roll-cuff beanie created for cool conditions. The stretch fit and soft, warm acrylic knit construction respects your every comfort.

Additional Features

- Soft and Warm Acrylic Knit Construction
- Stretch Fit
- Roll-Cuff Design

Fabrication

(Solid colors, Granite Heather, Navy Heather) 100% Acrylic
(Charcoal Heather, Grey Heather) 50% Acrylic/ 50% Polyester

Sizing

One Size

Decoration Options



MSRP

\$12.00 (A)



Grey Heather



Charcoal Heather

Granite Heather

Navy Heather

Black

Dolphin

Navy

AVALANTE KNIT BEANIE

BTC-2

Keep your head in the game. Fearlessly take on wintery days with this soft and warm acrylic knit construction and stretch-fit technical beanie.

Additional Features

- Soft and Warm Double Layer Knit Construction
- Stretch Fit
- Heathered Design

Fabrication

(Granite Heather, Navy Heather) 100% Acrylic;
(Charcoal Heather, Grey Heather) 50% Acrylic/ 50% Polyester

Sizing

One Size

Decoration Options



MSRP

\$10.00 (A)



Navy Heather



Charcoal Heather



Granite Heather



Grey Heather



TUNDRA KNIT BEANIE

BTS-1

It's no wonder this go-anywhere stretch-fit classic is a solid favorite. With its soft, warm acrylic knit construction and stylishly subtle style, it's easy to wear with just about anything.

Additional Features

- Soft and Warm Acrylic Knit Construction
- Stretch Fit

Fabrication

100% Acrylic

Sizing

One Size

Decoration Options



MSRP

\$10.00 (A)



Dolphin



Black



Midnight



Bright Red



MATRIX SOFTSHELL GLOVES

XBG-1

Soft-shell glove for cold-weather adventures. Lightweight, multi-layer gloves with suede gripper palm that are touch-screen compatible meaning you can keep your hands warm while using your electronic devices.

Additional Features

- Lightweight and Warm
- Touch Screen Sensitive
- Suede Gripper Palm
- Articulated Fit
- Cuff Tab Loop for Easy On/Off

Fabrication

86% Polyester/14% Spandex bonded with 100% Polyester Fleece, 8.85oz/yd² (USA)/300gsm (CDN)

Sizing

M-2XL

Decoration Options



MSRP

\$48.00 (A)



Black



KNITTED TOUCH-SCREEN GLOVES

TFG-1

Lightweight and warm stretch fit gloves that are touch-screen compatible meaning you can keep your hands warm while using your electronic devices.

Additional Features

- Lightweight and Warm
- Stretch Fit
- Touch Screen Sensitive Tips on Thumb and 2 Fingers

Fabrication

92% Polyester/8% Spandex Knitted Fleece, 8.55 oz/yd² (USA) / 290gsm (CDN)

Sizing

S/M, L/XL, XL+

Decoration Options



MSRP

\$40.00 (A)



Black

HELIX FLEECE LINED GLOVES

GLO-2

Polyester Taslan shell lined for a quick dry time and added protection from the elements. 40G Thinsulate insulation with fleece lining and elasticized cuff for comfort and fit.

Additional Features

- Polyester Taslan Shell Lined with Soft 100% Polyester Fleece Lining
- 40g of Thinsulate for Added Warmth
- Elasticized Cuff for Comfort Fit & Heat Retention

Fabrication 100% Polyester

Sizing M-2XL

Decoration Options



MSRP \$22.00 (A)



Black

HELIX FLEECE GLOVES

GLO-1

Relish the warmth and comfort of a microfleece interior, while the 100% acrylic knit construction takes on the role of protector in harsh conditions.

Additional Features

- Versatile Midweight Gloves
- Soft 100% Polyester Fleece with the Addition of 40g Thinsulate for Additional Warmth
- Elasticized Cuff for Comfort Fit & Heat Retention

Fabrication 100% Polyester Fleece

Sizing M-2XL

Decoration Options



MSRP \$18.00 (A)



Black



Black/Red Plaid





AVALANTE KNIT GLOVES

GLX-2

Soft, lightweight, and warm flexible stretch knit cuff gloves with touch screen sensitivity allows you to freely use your devices while keeping your hands warm.

Additional Features

- Soft, Lightweight and Warm Single Layer Knit Construction
- Flexible Stretch Knit Cuff
- Touch Screen Sensitive Tips on Thumb and Index Fingers

Fabrication

(Black) 100% Acrylic
(Charcoal Heather) 50% Acrylic/50% Polyester

Sizing

S-L

Decoration Options



MSRP

\$15.00 (A)



Charcoal Heather

Black

OASIS TOUCH SCREEN GLOVES


GLX-1

Incredibly comfortable poly spandex construction delivers a lightweight and warm stretch fit gloves that is touch-screen compatible so you can keep your hands warm while using your electronic devices. ViralOff® antimicrobial textile treatment inactivates pathogens, reduces contamination risk, and allows you to wear your gloves longer with less washing.

- Additional Features
- ViralOff® Antimicrobial Treatment
 - Touch Screen Friendly
 - Multi-functional use
 - Incredibly Comfortable Poly Spandex

Fabrication 88% Polyester/ 12% Spandex

Sizing S/L

Decoration Options 

MSRP \$20.00 (A)



Black



Grey Heather



AVALANTE KNIT SCARF

SCX-1

A gentle hug of warmth on cold days. The Avalante Knit Scarf with a soft, lightweight, and warm single layer knit construction and full coverage design is exactly what you need to keep your neck warm during the cooler and chilly days.

- Additional Features
- Soft, Lightweight and Warm Single Layer Knit Construction
 - Full Coverage Design

Fabrication (Black) 100% Acrylic;
(Charcoal Heather) 50% Acrylic/
50% Polyester

Sizing One Size

Decoration Options  

MSRP \$18.00 (A)



Black

Charcoal Heather



SCIRROCO CAP

FPX-1

Barely break a sweat as you explore the outdoors in this classic, structured fit cap with an interior sweatband. Its mesh back panel adds ventilation and enhances breathability while you stay out for a long time.

Additional Features

- Pure Earth by STORMTECH™
- 5-Panel Silhouette
- Mesh Back Panels
- Snap Back Closure
- Pre-Curved Bill with 5 Rows of Stitching
- Interior Sweatband

Fabrication

(Shell) 100% BCI Cotton Canvas; Mesh: 100% Polyester Mesh

Sizing

One Size

Decoration Options



Technology



Pewter

MSRP

\$16.00 (A)



Black



Navy



EXPLORER CAP

FPX-2

Adjust on the go. If you choose the clean, classic look and prefer comfort, choose the Explorer Cap. You will be ready for any experience in this cap with its snap back closure, 5-panel silhouette, and interior sweatband.

Additional Features

- Pure Earth by STORMTECH™
- 5-Panel Silhouette
- Snap Back Closure
- Embroidered Eyelets
- Pre-Curved Bill with 5 Rows of Stitching
- Interior Sweatband

Fabrication

100% BCI Cotton Canvas

Sizing

One Size

Decoration Options



Technology



Black

MSRP

\$16.00 (A)



Pewter



Navy





NAVARRO CAP

FPX-3

This is your grab-and-go everyday cap. Embrace the unpredictability with its high crown 5-panel silhouette, interior sweatband, and snap back closure.

Additional Features

- Pure Earth by STORMTECH™
- High Crown 5 Panel Silhouette
- Interior Sweatband
- Pre-Curved Bill with 5 Rows of Stitching
- Snap Back Closure
- Embroidered Eyelets

Fabrication

100% BCI Cotton Twill

Sizing

One Size

Decoration Options



Technology



MSRP

\$16.00 (A)



Pewter



Black



Navy

SUMMIT CAP

TXH-1

Begin the adventure. This cap gives you security when you are out in the wild with its unstructured 6-panel silhouette, interior sweatband and adjustable hook and loop closure.

Additional Features

- Pure Earth by STORMTECH™
- Unstructured 6 Panel Silhouette
- Interior Sweatband
- Pre-Curved Bill with 4 Rows of Stitching
- Embroidered Eyelets
- Adjustable Hook and Loop Closure

Fabrication

100% Recycled Nylon

Sizing

One Size

Decoration Options



Technology



Navy

MSRP

\$18.00 (A)



Black



Pewter



STEELHEAD CANVAS CAP

CWH-1

Made from 100% BCI Cotton, this Steelhead Canvas Cap is perfect for the ultimate casual look with a classic shape that maintains comfort and protects your face from the sun.

Additional Features

- Pure Earth by STORMTECH™
- Unstructured 6-Panel Silhouette
- Interior Sweatband
- Embroidered Eyelets
- Adjustable Hook and Loop Closure
- Pre-Curved Bill with 5 Rows of Stitching

Fabrication

100% BCI Cotton Canvas

Sizing

One Size

Decoration Options



Technology



Pine

MSRP

\$16.00 (A)



Black



Pewter



Navy



UNISEX SPORT SOCK - PACK OF 3

SMX-1

The unique tri-fabric blend of the Unisex Sport Sock pulls moisture away from skin. Features ribbed arch band that provides active support.

- Additional Features**
- 3 pairs/pack
 - Padded Reinforced Heel and Toe
 - Tri-fabric blend
 - Ribbed arch band

Fabrication 97% Polyester/ 3% Spandex

Sizing One Size

MSRP \$20.00 (A)



Black/Grey



White/Grey

UNISEX TRAIL SOCK (3-PACK)

SMX-2

The unique tri-fabric blend of the Unisex Trail Sock pulls moisture away from skin. Features ribbed arch band that provides active support.

- Additional Features**
- 3 pairs/pack
 - Padded Reinforced Heel and Toe
 - Tri-fabric blend
 - Ribbed arch band

Fabrication 89% Polyester/ 8% Nylon/ 3% Spandex

Sizing One Size

MSRP \$20.00 (A)



Black/Grey



Granite/Grey



STORMTECH®
nurtured by nature

WWW.STORMTECHPERFORMANCE.COM

Instagram: @stormtech1977 Facebook: @stormtechcorporate

